

Jorge Brovetto - RECTOR

Domingo Carlevaro - DIRECTOR DE PLANEAMIENTO UNIVERSITARIO

Alfredo Errandonea (h) - DIRECTOR DEL INSTITUTO DE CIENCIAS SOCIALES

Rodolfo Léméz - COORDINADOR GRAL. DEL "PROYECTO CENSO UNIVERSITARIO"

Jorge Graciarena - CONSULTOR

Equipo técnico multidisciplinario

Mariana Bertonasco

Oscar Buschiazzo

Beatriz Diconca

Renato Operti

Alberto Villagrán

Montevideo, julio de 1989

CUADRO No.1 INDICES DE CRECIMIENTO DE LA MATRICULA DE LOS SISTEMAS EDUCATIVOS
SEGUN NIVELES PARA PAISES DE LA REGION. 1960 - 1985/86.-

	1er. NIVEL				2do. NIVEL				3er. NIVEL			
	1960	1970	1980	1985/86	1960	1970	1980	1985/86	1960	1970	1980	1985/86
ARGENTINA	100	128,04	144,29	167,71	100	169,51	229,34	333,56	100	168,63	282,56	519,09
BRASIL	100	190,06	270,05	313,40	100	375,63	1056,94	1129,04	100	449,86	1472,70	1429,19
CHILE	100	162,28	173,85	168,05	100	221,13	433,06	512,73	100	301,34	461,71	799,34
URUGUAY (1)	100	110,59	103,55	110,18	100	187,16	184,16	241,23	100	138,38	222,22	401,11

(1) En el caso de Uruguay los valores del 3er. nivel se calcularon a partir de los resultados del Censo de Estudiantes Universitarios de 1988.-

CUADRO No.2
TASAS BRUTAS DE ESCOLARIDAD UNIVERSITARIA
A NIVEL SUB-REGIONAL, SEGUN PERIODO 1960 -1985/88.-

	1968		1985/88	
	POBLACION 20 - 24	TBEU MATRICULA	POBLACION 20 - 24	TBEU MATRICULA
ARGENTINA	1.581.227	173.935	2.338.000	902.882
BRASIL	5.980.688	95.691	13.633.000	1.367.609
CHILE	634.805	26.027	1.252.000	208.045
URUGUAY	200.715	15.320	226.918	61.450

NOTA: En los casos de Argentina, Brasil y Chile los datos refieren a matrícula, mientras que en el caso de Uruguay son extraídos del último Censo de Estudiantes. A su vez, las estimaciones de Población de Uruguay corresponden a 1986. Respecto a Brasil, ambos datos (Población y Matrícula) pertenecen a 1985, mientras que en los casos de Argentina y de Chile refieren a 1986.-

CUADRO No.3 TASAS BRUTAS DE ESCOLARIDAD UNIVERSITARIA PARA URUGUAY, POR SEXOS SEGUN CENSOS UNIVERSITARIOS.-

SEXO	1960			1974			1980		
	POBLACION	UNIVERSIDAD	TBEU	POBLACION	UNIVERSIDAD	TBEU	POBLACION	UNIVERSIDAD	TBEU
MASCULINO	100.641	9.839	9.98	181.587	11.190	11.82	183.441	13.94	112.787
FEMENINO	100.874	6.281	6.28	100.960	7.460	7.39	100.660	11.70	114.211
TOTAL	200.175	15.320	7.63	282.467	18.650	9.21	484.309	22.83	226.918

NOTA: La Tasa Bruta de Escolaridad Universitaria resulta de dividir la cantidad de estudiantes universitarios registrados sobre el total de la población en el tramo etario de 20 a 24 años de edad. Constituye un indicador aproximado de penetración al sistema.-

CUADRO No.4 COMPOSICION DEL SISTEMA EDUCATIVO URUGUAYO POR NIVELES, EN 1988.

	CANTIDADES	PORCENTAJES
1.PRE-PRIMARIA	58.915	7,95
2.ESPECIALES PUBLICAS Y DE RECUPERACION	10.704	1,44
3.PRIMARIA	354.177	47,79
4.PRIMARIA AL AIRE LIBRE	2.015	0,27
5.SECUNDARIA	188.784	25,47
6.UTU	53.795	7,26
7.INSTITUTO NORMAL	4.494	0,61
8.IPA	3.370	0,45
9.INET	126	0,02
10.MAGISTERIAL SUPERIOR	314	0,04
11.UNIVERSIDAD	61.450	8,29
12.EDUCACION PARA ADULTOS	2.990	0,40
TOTALES	741.134	100,00

CUADRO No.5 PESO RELATIVO DE ESTUDIANTES POR FACULTADES E INSTITUTOS
CENSOS DE 1960, 1968, 1974 Y 1988.-

	1960	1968	1974	1988
Agronomía	3.2%	5.5%	6.4%	3.4%
Arquitectura	9.2%	7.5%	5.6%	6.5%
C.Económicas	14.0%	12.8%	12.5%	13.8%
Derecho y Cc.Ss.	32.0%	29.2%	28.9%	27.4%
Humanidades y Cc.	7.7%	4.6%	5.6%	7.1%
Ingeniería	4.1%	3.5%	5.6%	12.0%
Medicina	20.0%	23.3%	20.3%	13.0%
Odontología	4.5%	6.3%	7.0%	2.5%
Química	3.9%	3.6%	3.1%	3.6%
Veterinaria	1.4%	3.7%	5.0%	3.2%
Psicología	0.0%	0.0%	0.0%	6.2%
C.de la Comun.	0.0%	0.0%	0.0%	1.3%
TOTAL				
FACULTADES E				
INSTITUTOS	100.0%	100.0%	100.0%	100.0%

CUADRO No.6 PESO RELATIVO DE ESTUDIANTES POR ESCUELAS UNIVERSITARIAS
CENSOS DE 1960, 1968, 1974 Y 1988.-

Superior Técnica	0.0%	1.1%	0.0%	0.0%
Bellas Artes	30.4%	16.7%	0.0%	22.8%
Bibliotecología	6.5%	2.8%	12.4%	2.3%
Es.Música	4.1%	6.7%	21.8%	3.5%
Tec.Médica	17.8%	14.6%	35.2%	26.8%
Computación	0.0%	1.3%	0.0%	0.0%
Enfermería	7.0%	4.7%	0.0%	7.6%
Aux.Odonto.	0.0%	11.4%	0.0%	8.2%
Esc.Administración	0.0%	8.5%	0.0%	21.1%
Nut.yDiet.	7.3%	2.7%	0.0%	1.5%
Parteras	14.7%	10.1%	0.0%	0.5%
Serv.Social	12.2%	19.4%	30.6%	5.7%
TOTAL ESCUELAS	100.0%	100.0%	100.0%	100.0%

CUADRO No.7

INCREMENTO PORCENTUAL DE ESTUDIANTES POR FACULTADES, ESCUELAS
E INSTITUTOS. CENSOS DE 1960, 1968, 1974 Y 1980.

	1960	1968	1974	1980
Agron.	100	214,6%	371,7%	402,7%
Arquit.	100	100,5%	112,2%	269,5%
C.Econ.	100	112,0%	163,7%	374,5%
D.y Cs.Sc.	100	111,9%	165,5%	325,7%
Human.	100	73,7%	134,9%	351,9%
Ingen.	100	103,9%	247,9%	1106,3%
Medic.	100	142,6%	185,9%	247,3%
Odont.	100	171,2%	285,9%	210,6%
Quim.	100	114,7%	147,5%	347,9%
Veter.	100	330,7%	654,7%	878,6%
TOTAL FACULTADES E INSTITUTOS	100	122,8%	183,6%	380,2%
B.Artes	100	61,5%	0,0%	442,2%
Bibli.	100	47,5%	113,1%	212,1%
Es.Música	100	182,5%	311,1%	498,4%
Tec.Med	100	91,5%	116,5%	886,4%
Enfer.	100	74,8%	0,0%	639,3%
N y Diet.	100	41,4%	0,0%	122,5%
Parter.	100	76,9%	0,0%	19,1%
S.Soc.	100	177,5%	147,1%	274,9%
TOTAL ESCUELAS	100	111,7%	58,9%	588,6%
TOTAL UNIVERSIDAD	100	121,7%	171,1%	401,0%

NOTA: Excluye las Facultades y Escuelas que presentan registros incompletos, en dos años por lo menos.-

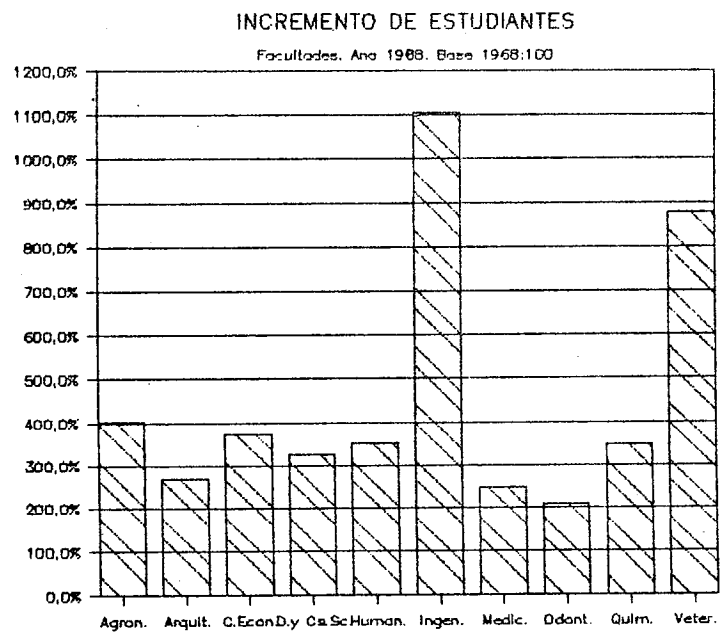
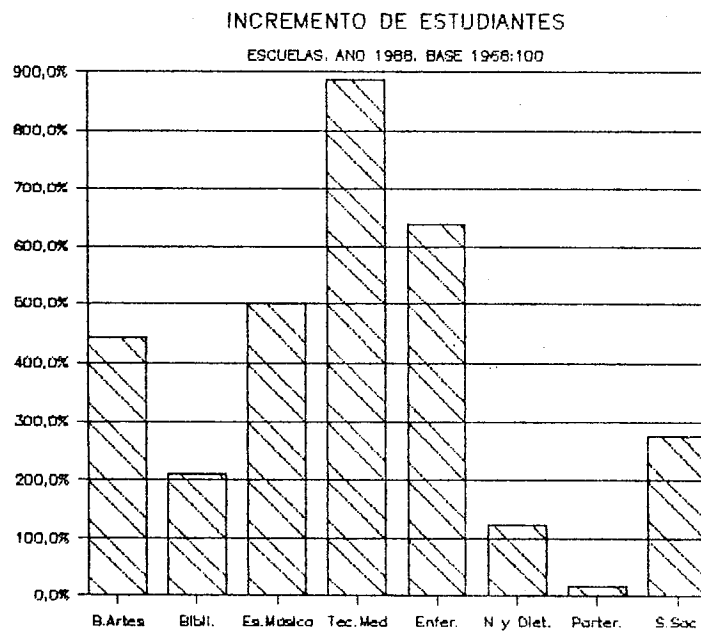


GRAFICO No. 2

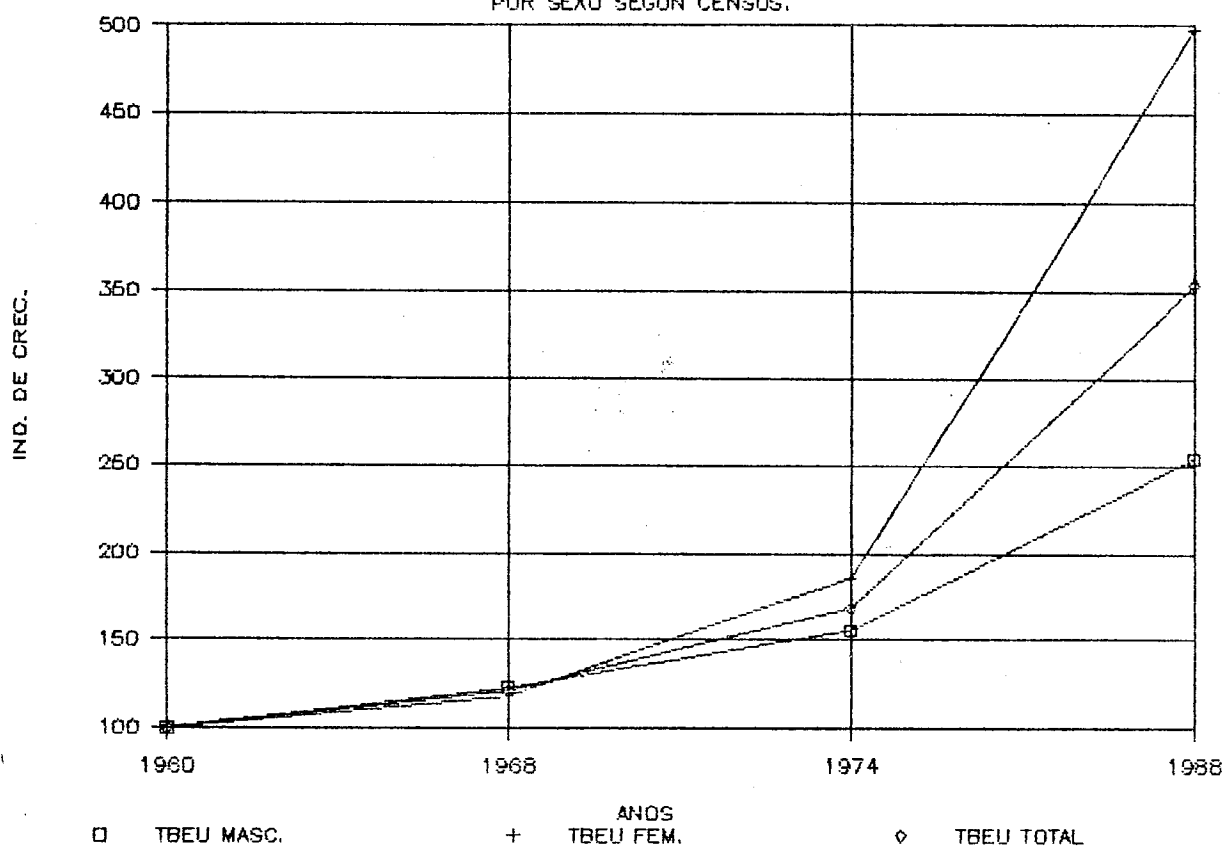


Nota: Excluye las Facultades y Escuelas que presentan registros incompletos, en dos años por lo menos.-

GRAFICO No. 3

INDICE DE CRECIMIENTO DE LA TBEU

POR SEXO SEGUN CENSOS.



CUADRO 8. POBLACION UNIVERSITARIA POR UNIDADES ACADEMICAS SEGUN ESTADO CIVIL, SEXO MASCULINO.

[illegible]

CUADRO 9. POBLACION UNIVERSITARIA POR UNIDADES
ACADEMICAS SEGUN ESTADO CIVIL. SEXO FEMENINO.

[illegible]

**CUADRO 10 POBLACION UNIVERSITARIA POR UNIDADES
ACADEMICAS SEGUN CATEGORIAS DE EDADES. SEXO MASCULINO**

SIN D HU. Y AGRON	ARQUI CCEE	DEREC	INGEN MEDIC	ODONT QUIMI	VETER ADMIN	BIBLI AUX.O	BELLA ENFER	NUT.D	MUSIC	PSICO	SER.S	TEC.M	CIE.C	ATOS	CIE. OMIA	TEC.	HO	IERIA	INA	OLOG. CA	INA.	IST.	OTEC.	DONT.	S AR.	ME.	DET.	A	LOG.	OC.	ED.	OM.	Total																																																																																																																																																																																																																																																																																																																																																																																																																																																																																																																																																																																																																																																																																																																																																																																																																																																																																																																																																																																						
17-20	21	177	270	370	781	1055	1096	464	92	330	136	68	4	54	167	7	2	26	86	7	84	88	5266	20.1	0.0	0.1	0.0	0.1	0.0	0.4	0.0	0.0	0.0	0.0	0.0	0.0	0.0	0.0	0.0	0.0	0.0	0.0	0.0	0.0	0.0	0.0	0.0	0.0	0.0	0.0	0.0	0.0	0.0	0.0	0.0	0.0	0.0	0.0	0.0	0.0	0.0	0.0	0.0	0.0	0.0	0.0	0.0	0.0	0.0	0.0	0.0	0.0	0.0	0.0	0.0	0.0	0.0	0.0	0.0	0.0	0.0	0.0	0.0	0.0	0.0	0.0	0.0	0.0	0.0	0.0	0.0	0.0	0.0	0.0	0.0	0.0	0.0	0.0	0.0	0.0	0.0	0.0	0.0	0.0	0.0	0.0	0.0	0.0	0.0	0.0	0.0	0.0	0.0	0.0	0.0	0.0	0.0	0.0	0.0	0.0	0.0	0.0	0.0	0.0	0.0	0.0	0.0	0.0	0.0	0.0	0.0	0.0	0.0	0.0	0.0	0.0	0.0	0.0	0.0	0.0	0.0	0.0	0.0	0.0	0.0	0.0	0.0	0.0	0.0	0.0	0.0	0.0	0.0	0.0	0.0	0.0	0.0	0.0	0.0	0.0	0.0	0.0	0.0	0.0	0.0	0.0	0.0	0.0	0.0	0.0	0.0	0.0	0.0	0.0	0.0	0.0	0.0	0.0	0.0	0.0	0.0	0.0	0.0	0.0	0.0	0.0	0.0	0.0	0.0	0.0	0.0	0.0	0.0	0.0	0.0	0.0	0.0	0.0	0.0	0.0	0.0	0.0	0.0	0.0	0.0	0.0	0.0	0.0	0.0	0.0	0.0	0.0	0.0	0.0	0.0	0.0	0.0	0.0	0.0	0.0	0.0	0.0	0.0	0.0	0.0	0.0	0.0	0.0	0.0	0.0	0.0	0.0	0.0	0.0	0.0	0.0	0.0	0.0	0.0	0.0	0.0	0.0	0.0	0.0	0.0	0.0	0.0	0.0	0.0	0.0	0.0	0.0	0.0	0.0	0.0	0.0	0.0	0.0	0.0	0.0	0.0	0.0	0.0	0.0	0.0	0.0	0.0	0.0	0.0	0.0	0.0	0.0	0.0	0.0	0.0	0.0	0.0	0.0	0.0	0.0	0.0	0.0	0.0	0.0	0.0	0.0	0.0	0.0	0.0	0.0	0.0	0.0	0.0	0.0	0.0	0.0	0.0	0.0	0.0	0.0	0.0	0.0	0.0	0.0	0.0	0.0	0.0	0.0	0.0	0.0	0.0	0.0	0.0	0.0	0.0	0.0	0.0	0.0	0.0	0.0	0.0	0.0	0.0	0.0	0.0	0.0	0.0	0.0	0.0	0.0	0.0	0.0	0.0	0.0	0.0	0.0	0.0	0.0	0.0	0.0	0.0	0.0	0.0	0.0	0.0	0.0	0.0	0.0	0.0	0.0	0.0	0.0	0.0	0.0	0.0	0.0	0.0	0.0	0.0	0.0	0.0	0.0	0.0	0.0	0.0	0.0	0.0	0.0	0.0	0.0	0.0	0.0	0.0	0.0	0.0	0.0	0.0	0.0	0.0	0.0	0.0	0.0	0.0	0.0	0.0	0.0	0.0	0.0	0.0	0.0	0.0	0.0	0.0	0.0	0.0	0.0	0.0	0.0	0.0	0.0	0.0	0.0	0.0	0.0	0.0	0.0	0.0	0.0	0.0	0.0	0.0	0.0	0.0	0.0	0.0	0.0	0.0	0.0	0.0	0.0	0.0	0.0	0.0	0.0	0.0	0.0	0.0	0.0	0.0	0.0	0.0	0.0	0.0	0.0	0.0	0.0	0.0	0.0	0.0	0.0	0.0	0.0	0.0	0.0	0.0	0.0	0.0	0.0	0.0	0.0	0.0	0.0	0.0	0.0	0.0	0.0	0.0	0.0	0.0	0.0	0.0	0.0	0.0	0.0	0.0	0.0	0.0	0.0	0.0	0.0	0.0	0.0	0.0	0.0	0.0	0.0	0.0	0.0	0.0	0.0	0.0	0.0	0.0	0.0	0.0	0.0	0.0	0.0	0.0	0.0	0.0	0.0	0.0	0.0	0.0	0.0	0.0	0.0	0.0	0.0	0.0	0.0	0.0	0.0	0.0	0.0	0.0	0.0	0.0	0.0	0.0	0.0	0.0	0.0	0.0	0.0	0.0	0.0	0.0	0.0	0.0	0.0	0.0	0.0	0.0	0.0	0.0	0.0	0.0	0.0	0.0	0.0	0.0	0.0	0.0	0.0	0.0	0.0	0.0	0.0	0.0	0.0	0.0	0.0	0.0	0.0	0.0	0.0	0.0	0.0	0.0	0.0	0.0	0.0	0.0	0.0	0.0	0.0	0.0	0.0	0.0	0.0	0.0	0.0	0.0	0.0	0.0	0.0	0.0	0.0	0.0	0.0	0.0	0.0	0.0	0.0	0.0	0.0	0.0	0.0	0.0	0.0	0.0	0.0	0.0	0.0	0.0	0.0	0.0	0.0	0.0	0.0	0.0	0.0	0.0	0.0	0.0	0.0	0.0	0.0	0.0	0.0	0.0	0.0	0.0	0.0	0.0	0.0	0.0	0.0	0.0	0.0	0.0	0.0	0.0	0.0	0.0	0.0	0.0	0.0	0.0	0.0	0.0	0.0	0.0	0.0	0.0	0.0	0.0	0.0	0.0	0.0	0.0	0.0	0.0	0.0	0.0	0.0	0.0	0.0	0.0	0.0	0.0	0.0	0.0	0.0	0.0	0.0	0.0	0.0	0.0	0.0	0.0	0.0	0.0	0.0	0.0	0.0	0.0	0.0	0.0	0.0	0.0	0.0	0.0	0.0	0.0	0.0	0.0	0.0	0.0	0.0	0.0	0.0	0.0	0.0	0.0	0.0	0.0	0.0	0.0	0.0	0.0	0.0	0.0	0.0	0.0	0.0	0.0	0.0	0.0	0.0	0.0	0.0	0.0	0.0	0.0	0.0	0.0	0.0	0.0	0.0	0.0	0.0	0.0	0.0	0.0	0.0	0.0	0.0	0.0	0.0	0.0	0.0	0.0	0.0	0.0	0.0	0.0	0.0	0.0	0.0	0.0	0.0	0.0	0.0	0.0	0.0	0.0	0.0	0.0	0.0	0.0	0.0	0.0	0.0	0.0	0.0	0.0	0.0	0.0	0.0	0.0	0.0	0.0	0.0	0.0	0.0	0.0	0.0	0.0	0.0	0.0	0.0	0.0	0.0	0.0	0.0	0.0	0.0	0.0	0.0	0.0	0.0	0.0	0.0	0.0	0.0	0.0	0.0	0.0	0.0	0.0	0.0	0.0	0.0	0.0	0.0	0.0	0.0	0.0	0.0	0.0	0.0	0.0	0.0	0.0	0.0	0.0	0.0	0.0	0.0	0.0	0.0	0.0	0.0	0.0	0.0	0.0	0.0	0.0	0.0	0.0	0.0	0.0	0.0	0.0	0.0	0.0	0.0	0.0	0.0	0.0	0.0	0.0	0.0	0.0	0.0	0.0	0.0	0.0	0.0	0.0	0.0	0.0	0.0	0.0	0.0	0.0	0.0	0.0	0.0	0.0	0.0	0.0	0.0	0.0	0.0	0.0	0.0	0.0	0.0	0.0	0.0	0.0	0.0	0.0	0.0	0.0	0.0	0.0	0.0	0.0	0.0	0.0	0.0	0.0	0.0	0.0	0.0	0.0	0.0	0.0	0.0	0.0	0.0	0.0	0.0	0.0	0.0	0.0	0.0	0.0	0.0	0.0	0.0	0.0	0.0	0.0	0.0	0.0	0.0	0.0	0.0	0.0	0.0	0.0	0.0	0.0	0.0	0.0	0.0	0.0	0.0	0.0	0.0	0.0	0.0	0.0	0.0	0.0	0.0	0.0	0.0	0.0	0.0	0.0	0.0	0.0	0.0	0.0	0.0	0.0	0.0	0.0	0.0	0.0	0.0	0.0	0.0	0.0	0.0	0.0	0.0	0.0	0.0	0.0	0.0	0.0	0.0	0.0	0.0	0.0	0.0	0.0	0.0	0.0	0.0	0.0	0.0	0.0	0.0	0.0	0.0	0.0	0.0	0.0	0.0	0.0	0.0	0.0	0.0	0.0	0.0	0.0	0.0	0.0	0.0	0.0	0.0	0.0	0.0	0.0	0.0	0.0	0.0	0.0	0.0	0.0	0.0	0.0	0.0	0.0	0.0	0.0	0.0	0.0	0.0	0.0	0.0	0.0	0.0	0.

**CUADRO 11 POBLACION UNIVERSITARIA POR UNIDADES
ACADEMICAS SEGUN CATEGORIAS DE EDADES. SEXO FEMENINO**

SIN D HU. Y AGRON	ARQUI CCEE	DEREC	INGEN MEDIC	ODONT QUIMI	VETER ADMIN	BIBLI AUX.O	BELLA ENFER	NUT.D	MUSIC	PARTIE	PSICO	SER.S	TEC.M	CIE.C	Total										
ATOS	CIE. OMIA	TEC.	HO	IERIA	INA	OLOG. CA	INA.	IST.	OTEC.	DONT. S	AR. ME.	LOG.	OC.	ED.	OM.										
17-20	0.1	0.0	0.0	0.0	0.0	0.0	0.0	0.0	0.0	0.0	0.0	0.0	0.0	0.0	0.0										
21-24	6.1	333	113	462	1093	2542	375	963	241	448	129	224	33	170	279	239	63	23	17	654	165	518	144	9234	26.2
21-24	61	610	153	540	1422	3216	546	1329	388	400	196	414	40	184	272	294	42	51	8	922	158	741	108	12002	34.1
25-29	21	584	123	344	900	1900	327	1140	189	273	219	427	33	90	237	68	21	30	6	541	73	407	60	7994	22.7
30-34	0	366	48	90	274	927	74	359	41	49	94	169	37	39	138	46	5	20	9	271	46	174	36	3312	9.4
35 y más	0	482	10	55	70	735	36	165	41	27	45	89	44	29	360	32	2	14	3	233	27	130	54	2683	7.6
Total	160	2377	449	1491	3740	9321	1359	3956	900	1198	683	1323	187	512	1287	639	133	138	43	2627	469	1973	402	35241	100.0

**CUADRO 12 POBLACION UNIVERSITARIA POR UNIDADES
ACADEMICAS SEGUN NUMERO DE HIJOS. SEXO MASCULINO**

SIN D.HU. Y AGRON. ARQUI. CCEE		DEREC	INGEN	MEDIC	ODONT	QUIMI	VETER	ADMIN	BIBLI	AUX.O	BELLA	ENFER	NUT.D	MUSIC	PSICO	SER.S	TEC.M	CIE.C	Total
ATOS		HO	IERIA	INA	OLOG.	CA	INA.	IST.	OTEC.	DONT.	S	AR.	ME.	DET.	A	LOG.	OC.	ED.	OM.
SIN DATOS	1	0.0	0.1	0.0	0.1	0.1	0.1	0.1	0.1	0.1	0.1	0.1	0.1	0.1	0.1	0.1	0.1	0.1	59
	2	0.0	0.1	0.0	0.1	0.1	0.1	0.1	0.1	0.1	0.1	0.1	0.1	0.1	0.1	0.1	0.1	0.1	3.2
NO TIENE	3	10461	11371	16531	28781	40631	42811	22691	3671	6051	8251	4721	191	1891	6111	331	1431	4821	361
	4	60.0	77.4	86.5	86.7	83.1	80.5	86.9	79.0	86.6	89.4	82.2	82.1	82.6	85.1	79.6	73.3	100.0	83.2
1	2	1421	991	1311	3401	5631	3381	3231	241	571	941	551	0.1	241	801	61	0.1	121	61
	3	7.40.0	10.51	7.51	6.91	9.81	11.21	6.91	11.31	5.81	8.41	9.41	9.61	0.0	10.0	10.41	13.51	0.1	8.71
2	1	0.0	7.91	3.91	3.61	4.81	5.81	4.21	6.51	2.71	1.91	5.51	5.41	17.41	3.61	6.31	8.91	0.0	6.21
	2	0.0	7.91	3.91	3.61	4.81	5.81	4.21	6.51	2.71	1.91	5.51	5.41	17.41	3.61	6.31	8.91	0.0	6.21
3	1	0.0	371	241	311	571	981	651	661	41	21	181	101	0.1	111	161	0.1	21	91
	2	0.0	2.71	1.81	1.61	1.91	1.31	2.31	1.01	0.31	1.81	1.71	0.0	0.51	2.11	2.21	0.0	1.11	1.51
4 O MAS	1	0.0	181	41	131	161	281	131	201	81	0.1	101	61	0.1	0.1	91	11	0.1	61
	2	0.0	1.51	0.31	0.71	0.51	0.61	0.31	0.71	1.91	0.0	1.01	0.0	0.0	1.21	2.21	0.0	3.41	0.51
Total		51	13541	13151	19071	34651	50491	49241	28711	4141	6771	10041	5751	231	2221	7661	451	31	1761
		100.0	0.100.0	0.100.0	0.100.0	0.100.0	0.100.0	0.100.0	0.100.0	0.100.0	0.100.0	0.100.0	0.100.0	0.100.0	0.100.0	0.100.0	0.100.0	0.100.0	0.100.0

**CUADRO 13 POBLACION UNIVERSITARIA POR UNIDADES
ACADEMICAS SEGUN NUMERO DE HIJOS. SEXO FEMENINO**

SIN D.HU. Y AGRON. ARQUI. CCEE		DEREC	INGEN	MEDIC	ODONT	QUIMI	VETER	ADMIN	BIBLI	AUX.O	BELLA	ENFER	NUT.D	MUSIC	PSICO	SER.S	TEC.M	CIE.C	Total
ATOS		HO	IERIA	INA	OLOG.	CA	INA.	IST.	OTEC.	DONT.	S	AR.	ME.	DET.	A	LOG.	OC.	ED.	OM.
SIN DATOS	1	0.0	0.0	0.0	0.1	0.1	0.1	0.1	0.1	0.1	0.1	0.1	0.1	0.1	0.1	0.1	0.1	0.1	63
	2	0.0	0.0	0.0	0.1	0.1	0.1	0.1	0.1	0.1	0.1	0.1	0.1	0.1	0.1	0.1	0.1	0.1	0.2
NO TIENE	3	17931	3841	13141	32841	77601	12041	32931	7861	10701	5621	10851	1241	4371	9251	5611	1141	301	21251
	4	92.91	75.41	85.51	88.11	87.31	83.51	88.61	83.21	87.51	89.31	82.31	82.01	85.41	71.91	87.81	90.21	82.51	80.91
1	1	2521	331	1091	3321	9241	871	3991	661	951	661	1291	331	321	1441	441	91	111	2771
	2	7.11	10.61	7.31	7.31	8.81	9.91	6.41	10.11	7.31	7.91	9.71	9.81	17.61	6.31	11.21	6.91	6.81	10.51
2	1	0.0	1911	221	481	1101	4261	371	1821	341	201	401	801	141	271	1291	231	31	1481
	2	0.0	8.01	4.91	3.21	2.91	4.61	2.71	4.61	3.81	1.71	5.91	6.01	7.51	5.31	10.01	3.41	2.31	5.81
3	1	0.0	1001	71	131	251	1331	161	571	101	111	241	111	241	111	121	641	81	41
	2	0.0	4.21	1.61	0.91	0.71	1.41	1.21	1.41	1.11	0.91	1.61	1.81	1.81	5.91	2.31	5.01	1.31	0.0
4 O MAS	1	0.0	411	31	51	51	611	31	161	31	21	41	41	51	21	231	21	11	201
	2	0.0	1.71	0.71	0.31	0.11	0.71	0.21	0.41	0.31	0.21	0.61	0.31	2.71	0.41	1.81	0.31	0.91	0.21
Total		141	23771	4491	14911	57601	93211	13591	79561	9001	11981	6831	13231	1871	5121	12871	6391	1331	431
		100.0	0.100.0	0.100.0	0.100.0	0.100.0	0.100.0	0.100.0	0.100.0	0.100.0	0.100.0	0.100.0	0.100.0	0.100.0	0.100.0	0.100.0	0.100.0	0.100.0	0.100.0

CUADRO 14 POBLACION UNIVERSITARIA POR UNIDADES
ACADEMICAS SEGUN TIPO Y LUGAR DE CURSADO DE EDUCACION SECUNDARIA COMUN.
SEXO MASCULINO.

[illegible]

[illegible]

CUADRO 18 POBLACION UNIVERSITARIA POR UNIDADES ACADEMICAS
SEGUN TIPO Y LUGAR DE CURSADO DE EDUCACION SUPERIOR TECNICA.
SEXO MASCULINO.

MU. Y AGRON ARDUI CCEE DEREK INGEN MEDIC DDOMT OUMI VETER ADMIN BIBLI AUX. O BELLA ENFER MUSIC PRICO SER. S TEC. M CIE. C CIE. CHIA TEC. HO IERIA INA DLOS. CA INA. IST. OTEC. DONT. S AR. ME. A LOG. OC. ED. OR.																				
SIN DATOS	8:	51	321	18:	31:	73:	12:	21	10:	11:	51	0:	6:	21	11	21	10:	0:	5:	21
	7:	7:	8:	9:	4:	6:	10:	6:	8:	7:	21:	16:	7:	2:	0:	27:	15:	33:	25:	0:
RUR. PUB.	0:	0:	0:	0:	0:	0:	1:	1:	0:	0:	0:	0:	0:	0:	0:	0:	0:	0:	0:	0:
	0:	0:	0:	0:	0:	0:	0:	0:	0:	0:	0:	0:	0:	0:	0:	0:	0:	0:	0:	0:
VIL. PUB.	1:	3:	0:	0:	2:	2:	0:	0:	0:	1:	1:	0:	0:	0:	0:	0:	0:	0:	0:	0:
	1:	0:	5:	0:	0:	0:	0:	0:	0:	0:	1:	5:	0:	0:	0:	0:	0:	0:	0:	0:
VIL. CONF.	0:	0:	0:	0:	1:	1:	0:	0:	0:	0:	0:	0:	0:	0:	0:	0:	0:	0:	0:	0:
	0:	0:	0:	0:	0:	0:	0:	0:	0:	0:	0:	0:	0:	0:	0:	0:	0:	0:	0:	0:
INT. PUB.	8:	4:	51	9:	24:	16:	13:	31	4:	1:	16:	0:	2:	21	0:	0:	0:	0:	0:	0:
	7:	7:	1:	5:	3:	8:	2:	0:	10:	17:	13:	8:	6:	1:	7:	0:	0:	0:	0:	0:
INT. LAICA	0:	0:	0:	0:	0:	0:	0:	0:	0:	0:	0:	0:	0:	0:	0:	0:	0:	0:	0:	0:
	0:	0:	0:	0:	0:	0:	0:	0:	0:	0:	0:	0:	0:	0:	0:	0:	0:	0:	0:	0:
INT. CONF.	1:	0:	0:	1:	3:	0:	4:	0:	0:	2:	1:	0:	0:	0:	0:	0:	0:	0:	0:	0:
	1:	0:	0:	0:	1:	0:	0:	0:	0:	0:	0:	0:	0:	0:	0:	0:	0:	0:	0:	0:
CDPT. PUB.	15:	23:	19:	24:	52:	87:	29:	31	5:	13:	27:	0:	3:	9:	1:	0:	10:	0:	6:	6:
	14:	4:	40:	5:	8:	17:	8:	11:	0:	23:	13:	0:	10:	19:	11:	7:	0:	13:	0:	0:
CDPT. LAICA	0:	0:	0:	0:	3:	5:	3:	0:	0:	0:	0:	0:	0:	0:	0:	0:	0:	0:	0:	0:
	0:	0:	0:	0:	1:	1:	0:	0:	0:	0:	0:	0:	0:	0:	0:	0:	0:	0:	0:	0:
CDPT. CONF.	0:	0:	0:	0:	1:	1:	0:	0:	0:	0:	0:	0:	0:	0:	0:	0:	0:	0:	0:	0:
	0:	0:	0:	0:	1:	0:	0:	0:	0:	0:	0:	0:	0:	0:	0:	0:	0:	0:	0:	0:
CAP. PUB.	64:	14:	33:	160:	134:	497:	55:	12:	19:	26:	176:	1:	10:	104:	1:	61	49:	7:	11:	37:
	61:	5:	24:	6:	57:	45:	62:	45:	11:	52:	40:	4:	39:	4:	76:	5:	100:	4:	45:	75:
CAP. LAICA	3:	2:	32:	24:	21:	64:	7:	2:	4:	3:	2:	0:	0:	0:	0:	0:	0:	0:	0:	0:
	2:	9:	3:	9:	12:	7:	2:	1:	5:	7:	8:	0:	0:	0:	0:	0:	0:	0:	0:	0:
CAP. CONF.	3:	2:	16:	26:	19:	39:	5:	1:	3:	4:	2:	0:	0:	0:	0:	0:	0:	0:	0:	0:
	2:	9:	3:	4:	9:	3:	4:	1:	4:	1:	0:	0:	0:	0:	0:	0:	0:	0:	0:	0:
Total	104:	57:	340:	279:	292:	791:	122:	23:	47:	66:	230:	11	22:	137:	31	81	60:	81	251	36:
	100:	0:	100:	0:	100:	0:	100:	0:	100:	0:	100:	0:	100:	0:	100:	0:	100:	0:	100:	0:

SIN D HU. Y AGRON	ARGUI	CCCE	DEREC	INGEN	MEDIC	ODONT	QUIMI	VETER	ADMIN	BIBLI	AUX.O	BELLA	ENFER	MUT.D	MUSIC	PARTE	PSICO	SER.S	TED.M	CIE.C	OT.	ED.	ON.	Total
ATOS	CIE.	OMIA	TEC.	HO	IERIA	INA	OLOG.	CA	INA.	IST.	OTEC.	DONT.	S.A.R.	ME.	IET.	A	RAS	LOG.	OC.					
1	22	3	25	14	58	18	12	2	24	7	2	2	8	28	5	0	2	0	34	1	29	4	300	
50.0	11.1	20.0	10.5	5.7	8.9	15.4	7.0	4.3	32.4	15.2	0.3	16.7	18.6	13.7	23.8	0.0	28.6	0	10.3	2.6	19.7	8.3	8.7	
0	0	0	0	0	0	0	0	0	0	0	0	0	0	0	0	0	0	0	0	0	0	0	1	
0	0	0	0	0	0	0	0	0	0	0	0	0	0	0	0	0	0	0	0	0	0	0	0	
0	0	0	0	0	0	0	0	0	0	0	0	0	0	0	0	0	0	0	0	0	0	0	0	
0	0	0	0	0	0	0	0	0	0	0	0	0	0	0	0	0	0	0	0	0	0	0	0	
0	0	0	0	0	0	0	0	0	0	0	0	0	0	0	0	0	0	0	0	0	0	0	0	
0	0	0	0	0	0	0	0	0	0	0	0	0	0	0	0	0	0	0	0	0	0	0	0	
0	0	0	0	0	0	0	0	0	0	0	0	0	0	0	0	0	0	0	0	0	0	0	0	
0	0	0	0	0	0	0	0	0	0	0	0	0	0	0	0	0	0	0	0	0	0	0	0	
0	0	0	0	0	0	0	0	0	0	0	0	0	0	0	0	0	0	0	0	0	0	0	0	
0	0	0	0	0	0	0	0	0	0	0	0	0	0	0	0	0	0	0	0	0	0	0	0	
0	0	0	0	0	0	0	0	0	0	0	0	0	0	0	0	0	0	0	0	0	0	0	0	
0	0	0	0	0	0	0	0	0	0	0	0	0	0	0	0	0	0	0	0	0	0	0	0	
0	0	0	0	0	0	0	0	0	0	0	0	0	0	0	0	0	0	0	0	0	0	0	0	
0	0	0	0	0	0	0	0	0	0	0	0	0	0	0	0	0	0	0	0	0	0	0	0	
0	0	0	0	0	0	0	0	0	0	0	0	0	0	0	0	0	0	0	0	0	0	0	0	
0	0	0	0	0	0	0	0	0	0	0	0	0	0	0	0	0	0	0	0	0	0	0	0	
0	0	0	0	0	0	0	0	0	0	0	0	0	0	0	0	0	0	0	0	0	0	0	0	
0	0	0	0	0	0	0	0	0	0	0	0	0	0	0	0	0	0	0	0	0	0	0	0	
0	0	0	0	0	0	0	0	0	0	0	0	0	0	0	0	0	0	0	0	0	0	0	0	
0	0	0	0	0	0	0	0	0	0	0	0	0	0	0	0	0	0	0	0	0	0	0	0	
0	0	0	0	0	0	0	0	0	0	0	0	0	0	0	0	0	0	0	0	0	0	0	0	
0	0	0	0	0	0	0	0	0	0	0	0	0	0	0	0	0	0	0	0	0	0	0	0	
0	0	0	0	0	0	0	0	0	0	0	0	0	0	0	0	0	0	0	0	0	0	0	0	
0	0	0	0	0	0	0	0	0	0	0	0	0	0	0	0	0	0	0	0	0	0	0	0	
0	0	0	0	0	0	0	0	0	0	0	0	0	0	0	0	0	0	0	0	0	0	0	0	
0	0	0	0	0	0	0	0	0	0	0	0	0	0	0	0	0	0	0	0	0	0	0	0	
0	0	0	0	0	0	0	0	0	0	0	0	0	0	0	0	0	0	0	0	0	0	0	0	
0	0	0	0	0	0	0	0	0	0	0	0	0	0	0	0	0	0	0	0	0	0	0	0	
0	0	0	0	0	0	0	0	0	0	0	0	0	0	0	0	0	0	0	0	0	0	0	0	
0	0	0	0	0	0	0	0	0	0	0	0	0	0	0	0	0	0	0	0	0	0	0	0	
0	0	0	0	0	0	0	0	0	0	0	0	0	0	0	0	0	0	0	0	0	0	0	0	
0	0	0	0	0	0	0	0	0	0	0	0	0	0	0	0	0	0	0	0	0	0	0	0	
0	0	0	0	0	0	0	0	0	0	0	0	0	0	0	0	0	0	0	0	0	0	0	0	
0	0	0	0	0	0	0	0	0	0	0	0	0	0	0	0	0	0	0	0	0	0	0	0	
0	0	0	0	0	0	0	0	0	0	0	0	0	0	0	0	0	0	0	0	0	0	0	0	
0	0	0	0	0	0	0	0	0	0	0	0	0	0	0	0	0	0	0	0	0	0	0	0	
0	0	0	0	0	0	0	0	0	0	0	0	0	0	0	0	0	0	0	0	0	0	0	0	
0	0	0	0	0	0	0	0	0	0	0	0	0	0	0	0	0	0	0	0	0	0	0	0	
0	0	0	0	0	0	0	0	0	0	0	0	0	0	0	0	0	0	0	0	0	0	0	0	
0	0	0	0	0	0	0	0	0	0	0	0	0	0	0	0	0	0	0	0	0	0	0	0	
0	0	0	0	0	0	0	0	0	0	0	0	0	0	0	0	0	0	0	0	0	0	0	0	
0	0	0	0	0	0	0	0	0	0	0	0	0	0	0	0	0	0	0	0	0	0	0	0	
0	0	0	0	0	0	0	0	0	0	0	0	0	0	0	0	0	0	0	0	0	0	0	0	
0	0	0	0	0	0	0	0	0	0	0	0	0	0	0	0	0	0	0	0	0	0	0	0	
0	0	0	0	0	0	0	0	0	0	0	0	0	0	0	0	0	0	0	0	0	0	0	0	
0	0	0	0</																					

CUADRO 20 POBLACION UNIVERSITARIA POR UNIDADES ACADEMICAS

SEGUN AÑO DE INGRESO A CARRERAS SECUNDARIAS.

SEXO MASCULINO.

[illegible]

NOTA: La categoría "Sin datos" incluye la población universitaria masculina que no realiza carreras secundarias. -

CUADRO 22 POBLACION UNIVERSITARIA POR UNIDADES ACADEMICAS
SEGUN ETAPA ACTUAL DE CURSADO DE CARRERA SECUNDARIA.

SEXO MASCULINO.

		HU. Y AGRON	ARQUI	CCEE	DEREC	INGEN	MEDIC	DDONT	QUIMI	VETER	ADMIN	BIBLI	AUX.O	BELLA	ENFER	NUT.D	MUSIC	PSICO	SER.S	TEC.M	CIE.C	Total
		CIE. OMIA	TEC.	HO	IERIA	INA	DI.OG	CA	INA.	IST.	OTEC.	DONT.	S AR.	ME.	JET.	A	LOG.	OC.	ED.	OH.		
SIN DATOS	1	22	46	75	222	137	432	67	11	30	25	15	0	0	32	11	0	10	10	11	12	10
	2	4.8	66.7	49.0	61.2	13.1	26.2	23.8	7.1	40.5	43.1	16.5	0.0	0.0	21.3	16.7	0.0	10.9	11.9	7.7	5.7	16.4
MENOS 10	1	273	17	39	48	316	748	1071	8	21	13	48	4	19	61	41	21	39	40	0	95	32
	2	60.0	24.6	25.5	13.2	30.2	45.4	37.9	57.1	28.4	22.4	52.7	100.0	79.2	40.9	66.7	100.0	42.4	47.6	61.5	43.3	32.5
10-20	1	59	2	10	11	158	151	181	11	41	21	61	0	0	21	0	0	6	12	1	11	15
	2	13.0	2.9	6.5	3.0	15.1	9.2	6.4	7.1	5.4	3.4	6.6	0.0	0.0	14.1	0.0	0.0	6.5	14.3	7.7	5.2	24.6
20-30	1	23	1	6	9	91	105	151	11	41	31	41	0	11	51	0	0	13	1	3	16	3
	2	5.1	1.4	3.9	2.5	8.7	6.4	5.3	7.1	5.4	5.2	4.4	0.0	4.2	3.4	0.0	0.0	14.1	9.5	23.1	7.3	4.9
30-40	1	24	1	7	14	56	51	171	11	41	31	11	0	11	16	0	0	4	2	0	11	1
	2	5.3	1.4	4.6	3.9	5.4	3.1	6.0	7.1	5.4	5.2	1.1	0.0	4.2	10.7	0.0	0.0	4.3	2.4	0.0	5.2	1.6
40-50	1	15	0	3	6	73	44	171	21	21	61	0	0	21	9	11	0	6	4	0	23	0
	2	3.3	0.0	2.0	1.7	7.0	2.7	6.0	14.3	2.7	10.3	0.0	0.0	8.3	6.0	16.7	0.0	6.5	4.8	0.0	10.8	0.0
50-60	1	7	0	2	15	55	41	71	0	0	51	0	21	0	11	0	0	6	0	0	12	0
	2	1.5	0.0	1.3	4.1	5.3	2.5	2.5	0.0	6.0	0.0	2.2	0.0	4.2	0.7	0.0	0.0	6.5	0.0	0.0	5.7	0.0
60-70	1	6	0	0	14	41	16	11	0	31	0	11	0	0	0	21	0	2	4	0	21	0
	2	1.3	0.0	0.0	3.9	3.9	1.0	0.4	0.0	4.1	0.0	1.1	0.0	0.0	1.3	0.0	0.0	2.2	4.8	0.0	1.4	0.0
70-80	1	12	0	0	13	44	26	61	0	0	21	21	0	0	0	11	0	21	11	0	8	0
	2	2.6	0.0	0.0	3.6	4.2	1.6	2.1	0.0	0.0	3.4	2.2	0.0	0.0	0.7	0.0	0.0	2.2	1.2	0.0	3.8	0.0
80-90	1	5	2	10	9	53	19	121	0	11	11	61	0	0	0	11	0	0	11	0	13	0
	2	1.1	2.9	6.5	2.5	5.1	1.2	4.3	0.0	1.4	1.7	6.6	0.0	0.0	0.7	0.0	0.0	0.0	1.2	0.0	6.1	0.0
MAS 90	1	9	0	1	21	13	151	0	0	31	61	0	0	0	0	0	0	4	21	0	7	0
	2	2.0	0.0	0.7	0.6	2.0	0.8	5.3	0.0	0.0	5.2	6.6	0.0	0.0	0.0	0.0	0.0	4.3	2.6	0.0	3.3	0.0
Total	1	455	69	133	363	1045	1646	2821	14	74	58	91	4	24	149	61	21	92	184	131	212	611
	2	100.0	100.0	100.0	100.0	100.0	100.0	100.0	100.0	100.0	100.0	100.0	100.0	100.0	100.0	100.0	100.0	100.0	100.0	100.0	100.0	100.0

NOTA : La etapa de cursado está expresada en porcentajes. Los casos en que los valores corresponden a los extremos del intervalo, se consignan en aquél que lo reconoce como límite inferior.-

CUADRO 23 POBLACION UNIVERSITARIA POR UNIDADES ACADEMICAS
SEGUN ETAPA ACTUAL DE CURSADO DE CARRERA SECUNDARIA.
SEXO FEMENINO.

SIN D HUL Y AGRON ARQUI CODEE DEREC INGEN MEDIC ODONT QUIMI VETER ADMIN BIBLI AUX.O BELLA ENFER NUT.D MUSIC PARTE PSICO SER.S TEL.M CIE.C ATOS CIE. ONIA TEC. HO LERIA INA OLOS. CA INA. IST. OTEC. DONT. S AR. ME. IET. A RAS LOG. OC. ED. OM.																					
SIN DATOS	01	451	151	491	2471	2761	1221	951	411	571	161	171	111	51	401	201	61	91	21	751	181
	0.01	8.71	53.61	49.01	45.01	14.91	25.61	17.51	8.01	47.11	35.61	10.01	40.71	4.41	16.31	25.01	22.21	18.01	15.41	29.01	32.11
MENOS 10	11	2981	81	221	461	5921	2551	2351	161	331	141	641	111	671	1061	431	171	141	61	1081	241
	25.01	57.41	28.41	22.41	12.11	27.21	53.61	43.41	32.01	27.31	31.11	37.61	40.71	59.31	43.11	53.81	63.01	28.01	46.21	41.71	42.91
10-20	11	581	11	71	81	2491	311	241	51	31	41	111	21	51	341	51	01	71	21	191	61
	25.01	11.21	3.61	7.11	2.11	13.51	6.51	4.41	10.01	2.51	8.91	6.51	7.41	4.41	13.81	6.31	0.01	14.01	15.41	7.31	10.71
20-30	01	281	01	71	41	1661	251	261	21	61	21	121	01	21	111	11	21	41	01	261	31
	0.01	5.41	0.01	7.11	1.11	9.01	5.31	4.81	4.01	5.01	4.41	7.11	0.01	1.81	4.51	1.31	7.41	8.01	0.01	10.01	5.41
30-40	01	261	11	41	81	1221	131	281	41	51	21	71	01	21	281	21	01	11	31	11	321
	0.01	5.01	3.61	4.11	2.11	6.61	2.71	5.21	8.01	4.11	4.41	4.11	0.01	1.81	11.41	2.51	0.01	2.01	23.11	1.21	1.81
40-50	01	181	11	21	81	1171	121	471	61	31	21	71	01	71	181	21	01	41	01	51	21
	0.01	3.51	3.61	2.01	2.11	6.31	2.51	8.71	12.01	2.51	4.41	4.11	0.01	6.21	7.31	2.51	0.01	8.01	0.01	1.91	3.61
50-60	01	91	01	11	141	991	41	191	41	51	11	81	01	81	01	01	11	01	11	01	451
	0.01	1.71	0.01	1.01	3.71	5.41	0.81	3.51	8.01	4.11	2.21	4.71	0.01	7.11	0.01	1.31	0.01	2.01	0.01	1.51	0.01
60-70	11	51	11	11	121	771	21	111	11	11	11	61	01	41	31	01	01	61	01	51	11
	25.01	1.01	3.61	1.01	3.21	4.21	0.41	2.01	2.01	0.81	2.21	3.51	0.01	3.51	1.21	0.01	0.01	12.01	0.01	1.91	1.81
70-80	01	71	01	11	151	731	31	131	21	21	01	91	01	71	31	01	11	01	51	01	221
	0.01	1.31	0.01	1.51	3.91	4.01	0.61	2.41	4.01	1.71	0.01	5.31	0.01	6.21	1.21	0.01	3.71	2.01	0.01	1.91	0.01
80-90	01	151	01	51	141	1081	51	261	11	31	11	121	01	01	11	21	11	31	01	81	01
	0.01	2.91	0.01	5.11	3.71	5.81	1.11	4.81	2.01	2.51	2.21	7.11	0.01	0.01	0.41	2.51	3.71	6.01	0.01	3.11	0.01
MAS 90	11	101	11	01	41	581	41	181	51	31	21	171	31	61	21	41	01	01	01	11	191
	25.01	1.91	3.61	0.01	1.11	3.11	0.61	3.31	10.01	2.51	4.41	10.01	11.11	5.31	0.81	5.01	0.01	0.01	0.41	1.81	2.51
Total		41	5191	281	981	3801	18471	4761	5421	501	1211	451	1701	271	1131	2461	801	271	501	131	2591
		100.01	100.01	100.01	100.01	100.01	100.01	100.01	100.01	100.01	100.01	100.01	100.01	100.01	100.01	100.01	100.01	100.01	100.01	100.01	100.01

NOTA: La etapa de cursado está expresada en porcentajes. Los casos en que los valores corresponden a los extremos del intervalo, se consignan en aquél que lo reconoce como límite inferior.-

CUADRO 24 POBLACION UNIVERSITARIA POR UNIDADES ACADEMICAS
SEGUN ETAPA ACTUAL DE CURSADO DE CARRERA PRINCIPAL.
SEXO MASCULINO.

SIN D HU. Y AGRON AROUI CDEE DEREC INGEN MEDIC ODONTI QUIMI VETER ADMIN BIBLI AUX.O BELLA ENFER NUT.D MUSIC PSICO SER.S TEC.M CIE.C ATOS CIE. OMIA TEC.																																HO IERIA INA OLOG. CA INA. IST. OTEC. DONT. S AR. ME. IET. A LOG. OC. ED. OM.																																Total																																																																																																																																																																																																																																																																																																																												
SIN DATOS																																0.01	71	01	271	201	511	511	171	01	101	21	01	71	01	01	41	31	01	31	41	0.01	0.51	0.61	1.41	0.61	1.01	1.01	0.61	0.21	1.01	1.21	1.01	3.51	0.01	0.01	0.91	0.01	2.31	0.51	0.01	0.71	1.31	222																																																																																																																																																																																																																																																																																																																		
MENOS 10																																31	5911	2531	3191	9491	11341	16791	4501	1191	2671	1941	2541	51	1531	3141	1111	31	701	1741	161	1391	1841	7283	43.81	19.31	16.81	27.41	22.51	34.11	15.71	28.81	39.51	19.31	44.21	21.71	48.91	41.11	24.41	100.01	40.01	29.11	35.61	31.71	61.11	27.9																																																																																																																																																																																																																																																																																																																
10-20																																11	1341	1291	3141	5251	8851	4921	5091	501	821	941	481	31	01	1531	41	01	251	751	71	351	471	3412	20.01	9.91	9.81	16.51	15.21	17.61	10.81	10.81	12.11	12.11	9.41	8.31	13.01	0.01	19.91	8.91	0.01	14.31	12.51	15.51	0.01	15.61	15.61	15.61	3412																																																																																																																																																																																																																																																																																																													
20-30																																01	1471	781	2431	3311	6441	5371	2061	251	841	1001	401	01	51	461	81	01	111	861	61	421	231	2662	0.01	10.91	5.91	12.61	9.61	12.91	10.91	7.21	6.11	12.41	10.01	7.01	0.01	2.31	6.01	17.81	0.01	6.31	14.41	13.31	9.61	7.61	10.2																																																																																																																																																																																																																																																																																																															
30-40																																01	641	761	1961	2741	4941	3711	1561	411	661	911	351	01	21	1011	61	01	61	301	31	381	151	3065	0.01	4.71	5.81	10.31	7.91	9.81	7.51	5.41	9.91	9.81	9.11	6.11	0.01	0.91	13.21	13.31	0.01	3.41	5.01	6.71	8.71	5.01	7.9																																																																																																																																																																																																																																																																																																															
40-50																																11	651	711	1361	2641	4131	4081	2031	371	511	1071	261	21	151	911	81	01	111	861	61	421	231	3002	20.01	4.81	5.41	7.21	7.61	8.12	8.31	7.11	9.01	7.51	10.71	4.51	8.71	6.81	11.81	17.81	0.01	6.31	7.31	4.21	2.21	7.51	5.31	7.7																																																																																																																																																																																																																																																																																																														
50-60																																01	731	681	1221	2381	3031	3071	1871	321	311	881	411	11	221	151	21	01	71	631	41	171	11	1616	0.01	5.41	4.61	6.91	6.91	6.01	6.21	6.51	7.71	4.81	8.01	7.11	4.31	9.91	2.01	4.41	0.01	4.01	10.51	8.91	3.91	0.31	6.2																																																																																																																																																																																																																																																																																																															
60-70																																01	471	1381	1231	2641	2121	3271	1571	281	371	791	231	21	21	91	31	01	61	371	01	271	51	1526	0.01	5.51	10.51	6.51	7.61	4.21	6.61	5.51	6.81	5.51	7.91	4.01	8.71	0.91	1.21	6.71	0.01	3.41	6.71	0.01	6.21	1.71	5.8																																																																																																																																																																																																																																																																																																															
70-80																																01	651	811	901	2511	2231	2691	3351	281	381	851	301	11	41	121	11	01	141	331	31	381	151	1578	0.01	4.81	6.21	4.71	7.21	4.51	5.51	11.71	6.81	5.01	5.21	4.31	1.81	1.81	2.21	0.01	8.01	5.51	6.71	6.41	1.01	6.0																																																																																																																																																																																																																																																																																																																
80-90																																01	561	1291	1641	2151	3231	2551	4021	251	201	781	441	51	81	51	21	01	161	311	31	381	151	1843	0.01	4.11	9.81	8.61	6.21	5.41	5.21	14.01	8.51	3.01	7.81	7.71	21.71	3.61	0.71	4.41	0.01	9.11	5.21	6.71	11.81	0.31	7.0																																																																																																																																																																																																																																																																																																															
MAS 90																																01	1811	2911	1581	1331	3551	2231	4491	181	101	861	321	41	111	131	01	01	51	231	21	351	21	1941	0.01	7.51	22.11	8.31	5.81	7.01	4.41	15.61	4.41	1.51	8.61	5.61	17.41	5.01	1.71	0.01	0.01	2.91	3.81	4.41	5.71	0.71	7.4																																																																																																																																																																																																																																																																																																															
Total																																31	12501	13141	19021	34641	50391	49191	28711	4131	6761	10041	5751	231	2221	7681	451	31	1751	5981	451	4381	301	26150	100.01	100.01	100.01	100.01	100.01	100.01	100.01	100.01	100.01	100.01	100.01	100.01	100.01	100.01	100.01	100.01	100.01	100.01	100.01	100.01	100.01	100.01	100.01	100.01	100.01	100.01	100.01	100.01	100.01	100.01	100.01	100.01	100.01	100.01	100.01	100.01	100.01	100.01	100.01	100.01	100.01	100.01	100.01	100.01	100.01	100.01	100.01	100.01	100.01	100.01	100.01	100.01	100.01	100.01	100.01	100.01	100.01	100.01	100.01	100.01	100.01	100.01	100.01	100.01	100.01	100.01	100.01	100.01	100.01	100.01	100.01	100.01	100.01	100.01	100.01	100.01	100.01	100.01	100.01	100.01	100.01	100.01	100.01	100.01	100.01	100.01	100.01	100.01	100.01	100.01	100.01	100.01	100.01	100.01	100.01	100.01	100.01	100.01	100.01	100.01	100.01	100.01	100.01	100.01	100.01	100.01	100.01	100.01	100.01	100.01	100.01	100.01	100.01	100.01	100.01	100.01	100.01	100.01	100.01	100.01	100.01	100.01	100.01	100.01	100.01	100.01	100.01	100.01	100.01	100.01	100.01	100.01	100.01	100.01	100.01	100.01	100.01	100.01	100.01	100.01	100.01	100.01	100.01	100.01	100.01	100.01	100.01	100.01	100.01	100.01	100.01	100.01	100.01	100.01	100.01	100.01	100.01	100.01	100.01	100.01	100.01	100.01	100.01	100.01	100.01	100.01	100.01	100.01	100.01	100.01	100.01	100.01	100.01	100.01	100.01	100.01	100.01	100.01	100.01	100.01	100.01	100.01	100.01	100.01	100.01	100.01	100.01	100.01	100.01	100.01	100.01	100.01	100.01	100.01	100.01	100.01	100.01	100.01	100.01	100.01	100.01	100.01	100.01	100.01	100.01	100.01	100.01	100.01	100.01	100.01	100.01	100.01	100.01	100.01	100.01	100.01	100.01	100.01	100.01	100.01	100.01	100.01	100.01	100.01	100.01	100.01	100.01	100.01	100.01	100.01	100.01	100.01	100.01	100.01	100.01	100.01	100.01	100.01	100.01	100.01	100.01	100.01	100.01	100.01	100.01	100.01	100.01	100.01	100.01	100.01	100.01	100.01	100.01	100.01	100.01	100.01	100.01	100.01	100.01	100.01	100.01	100.01	100.01	100.01	100.01	100.01	100.01	100.01	100.01	100.01	100.01	100.01	100.01	100.01	100.01	100.01	100.01	100.01	100.01	100.01	100.01	100.01	100.01	100.01	100.01	100.01	100.01	100.01	100.01	100.01	100.01	100.01	100.01	100.01	100.01	100.01	100.01	100.01	100.01	100.01	100.01	100.01	100.01	100.01	100.01	100.01	100.01	100.01	100.01	100.01	100.01	100.01	100.01	100.01	100.01	100.01	100.01	100.01	100.01	100.01	100.01	100.01	100.01	100.01	100.01	100.01

NOTA: La etapa de cursado está expresada en porcentajes. Los casos en que los valores corresponden a los extremos del intervalo, se consignan en aquél que lo reconoce como límite inferior.-

CUADRO 25 POBLACION UNIVERSITARIA POR UNIDADES ACADEMICAS
SEGUN ETAPA ACTUAL DE CURSADO DE CARRERA PRINCIPAL.

SEXO FEMENINO.-

SIN D HU. Y AGRON ARQUI. CCEE DEREC INGEN MEDIC ODONT QUIMI VETER ADMIN BIBLI AUX.O BELLA ENFER NUT.D MUSIC PARTE PSICO SER.S TEC.M CIE.C																								
ATOS		CIE. OMIA		TEC.		HO		IERIA		INA		OLOG. CA		INA. IST. OTEC. DONT. S AR. ME. LET. A RAS		LOG. OC. ED. OM.								
SIN DATOS	0	0	23	21	27	21	94	12	13	31	19	21	61	11	21	04	181	11						
	0.0	1.0	0.4	1.8	0.6	1.0	0.9	0.3	0.3	1.6	0.3	0.5	0.5	0.4	0.5	1.3	0.8	1.4	0.0	0.7	1.1	0.6	0.2	
MENOS 10	4	1271	95	305	1073	2222	467	829	238	417	172	489	52	322	587	183	64	59	174	669	167	531	226	
	28.6	53.5	21.3	20.5	28.5	23.9	34.4	21.0	26.5	34.9	25.2	37.1	28.0	62.9	45.7	28.6	48.1	42.8	39.5	25.5	35.7	32.0	56.2	
10-20	0	223	56	267	541	1677	127	430	113	130	60	96	6	9	200	41	1	8	71	256	49	91	44	
	0.0	9.4	12.5	17.9	14.4	16.0	9.4	10.9	12.6	10.9	8.8	7.3	3.2	1.8	15.6	6.4	0.8	5.8	16.3	9.8	10.5	4.6	10.9	
20-30	3	185	30	176	396	1167	126	340	61	147	64	87	5	12	81	72	16	10	5	365	82	283	41	
	21.4	7.8	6.7	11.8	10.5	12.5	9.3	8.6	6.8	12.3	9.4	6.6	2.7	2.3	6.3	11.3	12.0	7.2	11.6	13.9	13.2	10.3	10.2	
30-40	2	96	25	141	283	918	117	246	85	112	58	86	3	10	193	92	10	7	3	144	17	160	28	
	14.3	4.0	5.6	9.5	7.5	9.9	8.6	6.2	9.5	9.4	8.5	6.5	1.6	2.0	15.0	14.4	7.5	5.1	7.0	5.5	3.6	8.1	7.0	
40-50	1	107	28	109	308	798	144	266	70	98	56	84	10	46	118	69	11	10	1	221	35	282	24	
	7.1	4.5	6.3	7.3	8.2	8.6	10.6	6.7	7.8	8.2	6.2	6.4	5.4	9.0	9.2	10.8	0.8	7.2	2.3	8.4	7.5	10.2	6.0	
50-60	0	70	25	80	261	425	86	187	59	81	51	70	17	44	37	45	4	9	2	298	24	137	7	
	0.0	2.9	5.6	5.4	6.9	4.6	6.3	4.7	6.6	6.8	7.5	5.3	9.1	8.6	2.9	7.0	3.0	6.5	4.7	11.4	5.1	6.9	1.7	
60-70	1	78	47	100	293	336	78	200	54	46	39	70	13	17	19	11	5	11	2	212	17	93	12	
	7.1	3.3	10.5	6.7	7.8	3.6	5.7	5.1	6.0	3.8	5.7	5.3	7.0	3.3	1.5	1.7	3.8	8.0	4.7	8.1	3.6	4.7	3.0	
70-80	0	78	16	82	250	419	74	471	61	57	49	80	12	18	22	11	5	4	3	175	48	128	4	
	0.0	3.3	3.6	5.5	6.6	4.5	4.4	11.9	6.8	4.8	7.2	6.1	6.5	3.5	1.7	1.7	3.8	2.9	7.0	6.7	10.3	6.5	1.5	
80-90	2	98	43	91	178	594	67	510	91	56	53	114	13	15	10	70	14	14	1	195	19	183	4	
	14.3	4.1	9.6	6.1	4.7	6.4	4.9	12.9	10.1	4.7	7.8	8.7	7.0	2.9	0.8	11.0	10.5	10.1	2.3	7.4	4.1	9.3	1.5	
MAS 90	1	146	80	110	156	662	60	460	63	33	78	135	54	17	12	37	12	4	2	70	25	132	7	
	7.1	6.1	17.9	7.4	4.1	7.1	4.4	11.6	7.0	2.8	11.4	10.3	29.0	3.3	0.9	5.8	9.0	2.9	4.7	2.7	5.3	6.7	1.7	
Total		141	2375	447	1488	3760	9312	1358	3952	899	1196	482	1317	186	512	1285	639	133	158	43	2623	468	1972	102
		100.0	100.0	100.0	100.0	100.0	100.0	100.0	100.0	100.0	100.0	100.0	100.0	100.0	100.0	100.0	100.0	100.0	100.0	100.0	100.0	100.0	100.0	

NOTA: La etapa de cursado está expresada en porcentajes. Los casos en que los valores corresponden a los extremos del intervalo, se consignan en aquél que lo reconoce como límite inferior.-

CUADRO 26 POBLACION UNIVERSITARIA POR OCUPACION DEL ESTUDIANTE
SEGUN ETAPA ACTUAL DE CURSADO DE CARRERA PRINCIPAL.
SEXO MASCULINO.

	SIN D	GEREN	PATRO	EMPLE	OBRER	T. IND	PROD.	F. ARM.	RENTA	NO TR	OTRA	NO. RE	Total
	ATOS	TE	N	ADO	O	ENP.	RUR.	ADAS	S	ABAJA	Ocup.	MUN.	
SIN DATOS	51	0:	12:	99:	5:	10:	3:	3:	1:	74:	5:	5:	222
	2.2:	0.0:	1.2:	0.8:	1.2:	0.5:	1.1:	1.8:	0.7:	0.9:	1.1:	1.4:	0.8
MENOS 10	79:	38:	195:	2845:	153:	407:	42:	61:	37:	3136:	162:	127:	7282
	35.1:	14.9:	19.4:	22.7:	37.5:	22.2:	16.0:	36.1:	26.4:	37.0:	34.3:	35.5:	27.9
10-20	21:	15:	93:	1526:	63:	203:	23:	24:	17:	1308:	64:	55:	3412
	9.3:	5.9:	9.3:	12.2:	15.4:	11.1:	8.8:	14.2:	12.1:	15.5:	13.6:	15.4:	13.1
20-30	25:	12:	125:	1248:	54:	171:	18:	14:	16:	902:	45:	32:	2662
	11.1:	4.7:	12.4:	9.9:	13.2:	9.3:	6.9:	8.3:	11.4:	10.7:	9.5:	8.9:	10.2
30-40	16:	10:	91:	975:	28:	150:	25:	13:	15:	675:	40:	26:	2064
	7.1:	3.9:	9.1:	7.8:	6.9:	8.2:	9.5:	7.7:	10.7:	8.0:	8.5:	7.3:	7.9
40-50	12:	28:	72:	1002:	27:	155:	21:	7:	11:	606:	37:	22:	2000
	5.3:	11.0:	7.2:	8.0:	6.6:	8.5:	8.0:	4.1:	7.9:	7.2:	7.8:	6.1:	7.6
50-60	11:	25:	68:	853:	21:	131:	7:	12:	7:	445:	23:	12:	1615
	4.9:	9.8:	6.8:	6.8:	5.1:	7.2:	2.7:	7.1:	5.0:	5.3:	4.9:	3.4:	6.2
60-70	13:	23:	66:	836:	14:	106:	28:	7:	8:	378:	23:	24:	1526
	5.8:	9.0:	6.6:	6.7:	3.4:	5.8:	10.7:	4.1:	5.7:	4.5:	4.9:	6.7:	5.8
70-80	13:	20:	74:	902:	19:	145:	23:	6:	5:	326:	26:	19:	1578
	5.8:	7.8:	7.4:	7.2:	4.7:	7.9:	8.8:	3.6:	3.6:	3.9:	5.5:	5.3:	6.0
80-90	14:	37:	95:	1110:	14:	156:	21:	12:	10:	333:	19:	22:	1843
	6.2:	14.5:	9.5:	8.8:	3.4:	8.5:	8.0:	7.1:	7.1:	3.9:	4.0:	6.1:	7.0
MAS 90	16:	47:	114:	1158:	10:	197:	51:	10:	13:	283:	28:	14:	1941
	7.1:	18.4:	11.3:	9.2:	2.5:	10.8:	19.5:	5.9:	9.3:	3.3:	5.9:	3.9:	7.4
Total	225:	255:	1005:	12554:	408:	1831:	262:	169:	140:	8466:	472:	358:	26145
	100.0:	100.0:	100.0:	100.0:	100.0:	100.0:	100.0:	100.0:	100.0:	100.0:	100.0:	100.0:	100.0

NOTA: La etapa de cursado está expresada en porcentajes. Los casos en que los valores corresponden a los extremos del intervalo, se consignan en aquél que lo reconoce como límite inferior.

CUADRO 27 POBLACION UNIVERSITARIA POR OCUPACION DEL ESTUDIANTE

SEGUN ETAPA ACTUAL DE CURSADO DE CARRERA PRINCIPAL.

SEXO FEMENINO.

	SIN D	GEREN	PATRO	EMPLE	OBRER	T.IND	PROD.	F.ARM	RENTA	NO TR	OTRA	NO.RE	Total
	ATOS	TE	N	ADO	O	ENP.	RUR.	ADAS	S	ABAJA	OCCUP.	MUN.	
SIN DATOS	2	2	2	121	1	14	1	1	1	128	5	4	282
	0.7	1.1	0.4	0.8	0.5	0.7	0.9	1.1	0.6	0.8	0.9	0.9	0.8
MEÑOS 10	104	47	103	3727	74	497	31	23	37	5604	188	120	10555
	36.4	25.1	20.1	25.4	40.0	26.6	27.9	25.3	22.6	34.8	33.1	27.3	30.0
10-20	47	18	62	1728	19	190	11	8	15	2229	60	44	4431
	16.4	9.6	12.1	11.8	10.3	10.2	9.9	8.8	9.1	13.8	10.6	10.0	12.6
20-30	18	13	52	1469	21	170	5	12	22	1759	67	43	3651
	6.3	7.0	10.2	10.0	11.4	9.1	4.5	13.2	13.4	10.9	11.8	9.8	10.4
30-40	21	11	35	1143	15	153	14	6	13	1360	35	30	2836
	7.3	5.9	6.8	7.8	8.1	8.2	12.6	6.6	7.9	8.4	6.2	6.8	8.1
40-50	24	9	48	1237	12	119	10	7	13	1250	35	41	2805
	8.4	4.8	9.4	8.4	6.5	6.4	9.0	7.7	7.9	7.8	6.2	9.3	8.0
50-60	17	9	44	941	9	108	8	9	17	804	28	24	2018
	5.9	4.8	8.6	6.4	4.9	5.8	7.2	9.9	10.4	5.0	4.9	5.5	5.7
60-70	17	15	28	860	4	87	4	5	6	672	32	24	1754
	5.9	8.0	5.5	5.9	2.2	4.7	3.6	5.5	3.7	4.2	5.6	5.5	5.0
70-80	13	19	37	1002	10	142	2	8	9	755	41	30	2069
	4.5	10.2	7.2	6.8	5.4	7.6	1.8	8.8	5.5	4.7	7.2	6.8	5.9
80-90	12	16	45	1216	14	160	15	3	17	864	39	36	2437
	4.2	8.6	8.8	8.3	7.6	8.6	13.5	3.3	10.4	5.4	6.9	8.2	6.9
MAS 90	11	28	56	1238	6	239	10	9	14	672	38	44	2355
	3.8	15.0	10.9	8.4	3.2	12.3	9.0	9.9	8.5	4.2	6.7	10.0	6.7
Total	286	187	512	14682	185	1869	111	91	164	16077	568	440	35192
	100.0	100.0	100.0	100.0	100.0	100.0	100.0	100.0	100.0	100.0	100.0	100.0	100.0

NOTA: La etapa de cursado está expresada en porcentajes. Los casos en que los valores corresponden a los extremos del intervalo, se consignan en aquél que lo reconoce como límite inferior.

CUADRO 28 POBLACION UNIVERSITARIA POR CANTIDAD DE HORAS
TRABAJADAS POR SEMANA SEGUN ETAPA ACTUAL DE CURSADO DE
CARRERA PRINCIPAL.

SEXO MASCULINO.-

SIN D NO TR HASTA 10-20 21-30 31-40 MAS D												Total
ATOS ABAJA 10 E 40												
SIN DATOS	51	71	11	15	17	43	60				222	
	2.3	0.8	0.7	0.7	0.7	0.8	1.0				0.8	
MEHOS 10	711	3218	427	487	558	1050	1473				7284	
	33.0	37.7	28.4	24.1	22.0	20.4	23.7				27.9	
10-20	291	1288	207	265	283	638	702				3412	
	13.5	15.1	13.7	13.1	11.2	12.4	11.3				13.0	
20-30	24	921	162	201	253	502	599				2662	
	11.2	10.8	10.8	9.9	10.0	9.8	9.7				10.2	
30-40	14	676	127	176	219	423	434				2865	
	6.5	7.9	8.4	8.4	8.7	8.2	7.8				7.9	
40-50	13	612	124	152	199	448	454				2802	
	6.0	7.2	6.2	7.5	7.9	8.7	7.3				7.7	
50-60	9	442	86	152	164	395	368				1616	
	4.2	5.2	5.7	7.5	6.5	7.7	5.9				6.2	
60-70	15	396	98	117	173	309	424				1526	
	7.0	4.6	6.5	5.8	6.8	6.0	6.8				5.8	
70-80	11	325	80	148	186	405	423				1578	
	5.1	3.8	5.3	7.3	7.3	7.9	6.8				6.0	
80-90	14	310	92	165	216	466	578				1843	
	6.5	3.6	6.1	8.2	8.5	9.1	9.3				7.0	
MAS 90	10	276	92	152	263	458	690				1941	
	4.7	3.2	6.1	7.5	10.4	8.9	11.1				7.4	
Total	215	8529	1506	2024	2531	5159	6207				26151	
	100.0	100.0	100.0	100.0	100.0	100.0	100.0				100.0	

CUADRO 29 POBLACION UNIVERSITARIA POR CANTIDAD DE HORAS
TRABAJADAS POR SEMANA SEGUN ETAPA ACTUAL DE CURSADO DE
CARRERA PRINCIPAL.

SEXO FEMENINO.-

SIN D NO TR HASTA 10-20 21-30 31-40 MAS D											
ATOS ABAJA 10 E 40											
SIN DATOS	41	127	21	23	38	48	27				279
	1.5	3.8	0.8	0.7	0.8	0.9	0.7				0.8
MENOS 10	74	5640	706	837	897	1311	1073				10560
	30.8	35.0	27.5	28.9	24.3	23.3	28.3				30.0
10-20	38	2244	316	399	480	522	511				4432
	15.4	13.9	12.3	9.8	10.9	11.0	13.5				12.8
20-30	18	1775	277	296	366	541	381				3654
	7.3	11.0	10.8	9.5	9.9	9.8	10.0				10.4
30-40	19	1366	226	245	282	420	278				2335
	7.7	8.5	8.8	7.9	7.7	7.5	7.3				8.1
40-50	25	1348	222	241	311	475	261				2886
	10.1	7.7	8.7	8.5	8.4	8.4	6.9				8.0
50-60	14	806	148	190	256	389	216				2019
	5.7	5.0	5.8	6.1	6.9	6.9	5.7				5.7
60-70	9	671	130	177	223	368	178				1754
	3.8	4.2	5.0	5.7	6.1	6.5	4.7				5.0
70-80	12	748	156	228	267	442	216				2069
	4.9	4.6	6.1	7.3	7.2	7.6	5.7				5.9
80-90	17	852	167	280	323	500	299				2438
	6.9	5.3	6.5	9.0	8.6	8.9	7.9				6.9
MAS 90	15	605	199	273	332	518	354				2356
	6.1	4.1	7.8	8.8	9.0	9.2	9.3				6.7
Total	247	16164	2566	3112	3685	5634	3794				75302
	100.0	100.0	100.0	100.0	100.0	100.0	100.0				100.0

NOTA: La etapa de cursado está expresada en porcentajes. Los casos en que los valores corresponden a los extremos del intervalo, se consignan en aquél que lo reconoce como límite inferior.-

CUADRO 31 POBLACION UNIVERSITARIA POR UNIDADES ACADEMICAS

SEGUN OCUPACION DEL ABUELO PATERNO.-

SEXO FEMENINO.-

SIN D.HU. Y AGRON ARQUI CCEE																		DEREC INGEN MEDIC ODONT QUIMI																		VETER ADMIN BIBLI AUX.O BELLA ENFER NUT.D MUSIC PARTE																		PSICD SER.S TEC.M CIE.C																		Total																																																																																																																																																																																																																																																																																																																																																																																																																																																																																																																																																																																																																																																																																																																																																																																																																																																																																																																																
ATOS CIE. OMIA TEC.																		HO IERIA INA OLOG. CA																		INA. IST. OTEC. DONT. S AR. ME.																		IET. A RAS																			LOG. OC. ED. OM.																																																																																																																																																																																																																																																																																																																																																																																																																																																																																																																																																																																																																																																																																																																																																																																																																																																																																																																															
SIN DATOS																		GERENTE																		PATRON																		EMPLEADO																		OBRERO																		T.INDEPN.																		PROD.RUR.																		F.ARMADAS																		RENTAS																		NO TRABAJA																		OTRA OCUP.																		NO REMUN.																		NO SABE																		Total																																																																																																																																																																																																																																																																																																																																																																																																																																																																																																																																																																																																																																																																																																																																																														
01	441	71	101	481	1311	691	1591	171	131	31	241	71	51	61	101	01	31	41	331	31	1221	41	717	2.0	01	1.91	1.61	0.71	1.31	1.41	5.11	4.01	1.91	1.11	0.31	1.81	1.61	1.01	0.51	1.61	0.01	2.21	9.31	1.31	0.61	6.21	1.01	01	521	141	581	941	1951	411	781	111	281	221	251	31	81	321	71	31	31	01	541	31	351	111	767	2.2	21	2981	641	2541	6051	13391	2131	5371	1571	2221	971	1561	161	711	2321	501	181	191	51	3361	431	2221	611	14.31	12.51	14.31	17.01	16.11	14.41	15.71	13.61	17.41	18.51	14.21	11.81	8.61	13.91	18.01	7.81	13.51	13.81	11.61	12.81	9.21	11.31	15.21	51	4931	961	3081	8771	20431	2921	8691	1861	3111	1261	3011	321	1111	3281	1271	331	241	21	5481	841	4401	961	35.71	20.71	21.41	20.71	23.31	21.91	21.51	22.01	20.71	26.01	18.41	22.81	17.11	21.71	25.51	19.91	24.81	17.41	4.71	20.91	17.91	22.31	23.91	21.9	01	1481	111	821	2191	4501	791	2591	321	671	211	681	81	221	781	491	51	61	21	1511	451	1031	201	0.01	6.21	2.41	5.51	5.81	4.91	5.81	6.51	3.61	5.61	3.11	5.11	4.31	4.31	6.11	7.71	3.81	4.71	5.71	9.61	5.21	5.01	1933	5.5	21	3231	401	2461	4801	12191	1761	5281	1261	1291	1021	1461	171	631	1991	531	121	231	61	3461	561	2411	721	14.31	13.61	8.91	16.51	12.81	12.11	13.01	13.31	14.01	10.81	14.91	11.11	9.11	12.31	15.51	8.31	9.01	16.71	14.01	13.21	11.91	12.71	17.91	13.1	21	2681	1241	1811	4761	15371	1371	5141	1271	1751	1571	1871	241	761	1781	1051	241	151	61	3401	751	3181	401	14.31	11.31	27.61	12.11	12.71	16.51	10.11	13.01	14.11	14.61	23.01	14.21	12.81	14.81	13.81	16.41	18.01	10.91	14.01	12.81	16.01	16.11	10.01	5086	14.4	01	291	111	261	471	1661	221	581	171	161	151	171	21	111	211	171	41	11	11	281	51	331	61	0.01	1.21	2.41	1.71	1.31	1.81	1.61	1.51	1.91	1.31	2.21	1.31	1.11	2.11	1.61	2.71	3.01	0.71	2.31	1.11	1.31	1.71	1.51	1.6	01	261	51	181	391	1041	111	251	71	121	31	171	11	41	191	51	11	01	281	31	111	41	0.01	1.11	1.11	1.21	1.01	1.11	0.81	0.61	0.81	1.01	0.41	1.31	0.51	0.81	1.51	0.81	0.81	0.01	0.01	1.11	0.61	1.01	1.0	01	201	01	121	251	371	91	111	31	21	01	71	01	11	31	31	21	01	11	11	11	11	141	11	0.01	0.61	0.01	0.81	0.71	0.41	0.71	0.31	0.31	0.21	0.01	0.51	0.01	0.21	0.21	0.51	1.51	0.01	2.31	0.41	0.21	0.71	0.21	163	0.5	01	751	81	661	961	1031	221	761	61	321	91	341	191	31	71	61	11	61	11	461	251	221	61	0.01	3.21	1.81	4.41	2.61	1.11	1.61	1.91	0.71	2.71	1.31	2.61	10.21	0.61	0.51	0.91	0.81	4.31	2.31	1.81	5.31	1.11	1.51	669	1.9	01	01	01	01	01	01	01	01	01	01	01	01	01	01	01	01	01	01	01	01	01	01	01	01	01	01	01	01	01	01	01	01	01	01	01	01	01	01	01	01	01	01	01	01	01	01	01	01	01	01	01	01	01	01	01	01	01	01	01	01	01	01	01	01	01	01	01	01	01	01	01	01	01	01	01	01	01	01	01	01	01	01	01	01	01	01	01	01	01	01	01	01	01	01	01	01	01	01	01	01	01	01	01	01	01	01	01	01	01	01	01	01	01	01	01	01	01	01	01	01	01	01	01	01	01	01	01	01	01	01	01	01	01	01	01	01	01	01	01	01	01	01	01	01	01	01	01	01	01	01	01	01	01	01	01	01	01	01	01	01	01	01	01	01	01	01	01	01	01	01	01	01	01	01	01	01	01	01	01	01	01	01	01	01	01	01	01	01	01	01	01	01	01	01	01	01	01	01	01	01	01	01	01	01	01	01	01	01	01	01	01	01	01	01	01	01	01	01	01	01	01	01	01	01	01	01	01	01	01	01	01	01	01	01	01	01	01	01	01	01	01	01	01	01	01	01	01	01	01	01	01	01	01	01	01	01	01	01	01	01	01	01	01	01	01	01	01	01	01	01	01	01	01	01	01	01	01	01	01	01	01	01	01	01	01	01	01	01	01	01	01	01	01	01	01	01	01	01	01	01	01	01	01	01	01	01	01	01	01	01	01	01	01	01	01	01	01	01	01	01	01	01	01	01	01	01	01	01	01	01	01	01	01	01	01	01	01	01	01	01	01	01	01	01	01	01	01	01	01	01	01	01	01	01	01	01	01	01	01	01	01	01	01	01	01	01	01	01	01	01	01	01	01	01	01	01	01	01	01	01	01	01	01	01	01	01	01	01	01	01	01	01	01	01	01	01	01	01	01	01	01	01	01	01	01	01	01	01	01	01	01	01	01	01	01	01	01	01	01	01	01	01	01	01	01	01	01	01	01	01	01	01	01	01	01	01	01	01	01	01	01	01	01	01	01	01	01	01	01	01	01	01	01	01	01	01	01	01	01	01	01	01	01	01	01	01	01	01	01	01	01	01</

**CUADRO 32 POBLACION UNIVERSITARIA POR OCUPACION DEL PADRE
SEGUN OCUPACION DEL ESTUDIANTE.-**

SEXO MASCULINO.-

	SIN D ATOS	GEREN TE	PATRO N	EMPLE ADO	O BRER	T.IND PROD.	F.ARM RUR.	RENTA ADAS	NO TR ABA	OCUP. MUN.	NO RE NO SA BE	Total
SIN DATOS	311 11.1	161 0.8	451 0.9	691 0.6	41 0.3	371 1.1	101 0.7	21 0.4	51 2.3	31 1.5	01 0.8	225 0.9
GERENTE	31 1.1	581 2.8	491 1.0	791 0.7	161 1.3	301 0.9	91 0.6	11 0.5	11 0.7	01 0.0	01 0.0	256 1.0
PATRON	141 5.0	841 4.1	4681 9.1	2561 2.3	301 2.5	761 2.3	321 2.1	81 1.7	61 2.8	101 4.2	151 0.0	1005 3.8
EMPLEADO	1191 42.5	9281 45.4	22031 43.1	62711 55.6	4351 51.9	13661 40.9	4111 26.8	2281 48.1	951 44.4	1331 36.8	101 100.0	12572 48.0
OBrero	61 2.1	171 0.8	531 1.0	1371 1.2	1151 9.5	391 1.2	161 1.0	81 1.7	31 1.4	61 4.4	51 1.4	410 1.6
T.INDENF.	201 7.1	1311 6.4	3181 6.2	7141 6.3	801 6.6	4051 12.1	751 4.9	211 4.4	191 8.9	101 7.4	301 8.3	1831 7.0
PROD.RUR.	31 1.1	141 0.7	361 0.7	321 0.3	81 0.7	181 0.5	1331 8.7	31 0.6	31 1.4	41 3.0	71 1.9	262 1.0
F.ARMADAS	41 1.4	111 0.5	201 0.4	631 0.6	111 0.9	171 0.5	111 0.7	291 6.1	11 0.5	11 0.7	11 0.3	169 0.6
RENTAS	31 1.1	91 0.4	341 0.7	361 0.3	41 0.3	241 0.7	201 1.3	11 0.2	41 1.9	21 1.5	31 0.8	140 0.5
NO TRABAJA	651 23.2	7011 34.3	16901 33.0	33401 29.6	2861 23.7	12121 36.3	7581 49.4	1501 31.6	701 32.7	281 20.7	1281 35.5	8473 32.4
OTRA OCUP.	51 1.8	411 2.0	1041 2.0	1721 1.5	151 1.2	631 1.9	271 1.8	91 1.9	11 0.5	41 3.0	271 7.5	471 1.8
NO.REMUN.	71 2.5	331 1.6	971 1.9	1031 0.9	111 0.9	501 1.5	321 2.1	61 1.3	61 2.8	11 0.7	91 2.5	358 1.4
Total	2801 100.0	20431 100.0	51171 100.0	112721 100.0	12051 100.0	33371 100.0	15341 100.0	4741 100.0	2141 100.0	1351 100.0	3611 100.0	26172 100.0

CUADRO 33 POBLACION UNIVERSITARIA POR OCUPACION DEL PADRE
SEGUN OCUPACION DEL ESTUDIANTE.-

SEXO FEMENINO.-

SIN D GEREN PATRO EMPL OBRER T. IND PROD. F. ARM RENTA NO TR OTRA NO RE NO SA														Total	
ATOS	TE	N	ADO	O	ENP.	RUR.	ADAS	S	ABAJA	Ocup.	MUN.	BE			
SIN DATOS	17	21	64	106	16	27	14	6	3	2	7	0	3	286	0.8
	6.7	1.0	0.8	0.7	0.9	0.6	0.6	0.9	1.2	1.7	1.4	0.0	0.9		
GERENTE	3	29	40	57	13	23	7	4	2	1	5	0	3	187	0.5
	1.2	1.4	0.5	0.4	0.7	0.5	0.3	0.6	0.8	0.8	1.0	0.0	0.9		
PATRON	4	35	216	132	13	73	23	1	3	5	8	0	0	513	1.5
	1.6	1.7	2.8	0.9	0.7	1.6	1.0	0.1	1.2	4.2	1.6	0.0	0.0		
EMPLEADO	127	799	2819	7032	904	1627	639	258	85	67	166	4	169	14696	41.7
	50.2	39.4	37.0	47.1	49.2	36.6	28.4	38.5	33.9	55.8	33.5	36.4	51.7		
OBRERO	1	5	24	58	55	14	13	5	2	1	4	0	3	185	0.5
	0.4	0.2	0.3	0.4	3.0	0.3	0.6	0.7	0.8	0.8	0.8	0.0	0.9		
T. INDENP.	11	119	399	727	101	307	100	35	19	4	28	0	21	1871	5.3
	4.3	5.9	5.2	4.9	5.5	6.9	4.4	5.2	7.6	3.3	5.7	0.0	6.4		
PROD. RUR.	1	6	21	27	2	8	43	1	0	0	3	0	0	112	0.3
	0.4	0.3	0.3	0.2	0.1	0.2	1.9	0.1	0.0	0.0	0.6	0.0	0.0		
F. ARNADAS	0	7	10	35	7	5	0	22	1	0	0	1	3	91	0.3
	0.0	0.3	0.1	0.2	0.4	0.1	0.0	3.3	0.4	0.0	0.0	0.0	0.9		
RENTAS	0	13	40	41	2	32	25	2	7	0	2	0	0	164	0.5
	0.0	0.6	0.5	0.3	0.1	0.7	1.1	0.3	2.8	0.0	0.4	0.0	0.0		
NO TRABAJA	79	933	3751	6360	670	2185	1334	318	115	32	220	3	110	16110	45.7
	31.2	46.0	49.2	42.6	36.5	49.2	59.2	47.5	45.6	26.7	44.4	27.3	33.6		
OTRA OCUP.	6	20	107	195	40	81	25	12	10	7	38	2	9	568	1.6
	2.4	1.8	1.4	1.3	2.2	1.8	1.1	1.8	4.0	5.8	7.7	18.2	2.8		
NO. REMUN.	4	24	136	145	14	58	29	6	4	1	14	1	6	442	1.3
	1.6	1.2	1.8	1.0	0.8	1.3	1.3	0.9	1.6	0.8	2.8	9.1	1.8		
Total	253	2027	7627	14915	1837	4440	2252	670	251	120	495	11	327	35225	100.0
	100.0	100.0	100.0	100.0	100.0	100.0	100.0	100.0	100.0	100.0	100.0	100.0	100.0		

CUADRO 35 POBLACION UNIVERSITARIA POR OCUPACION DEL ABUELO PATERNO
SEGUN OCUPACION DEL PADRE.-

SEXO FEMENINO.-

SIN DATOS	SIN D GEREN PATRO EMPLE OBRER T.IND PROD. F.ARM RENTA NO TR OTRA NO RE NO SA	ATOS TE N	ADD O	ENP.	RUR.	ADAS S	ABAJA OCUP. MUN. BE	Total
	113: 6: 16: 29: 5: 17: 19: 2: 3: 0: 5: 0: 37: 252	15.8: 0.8: 0.3: 0.4: 0.3: 0.4: 0.4: 0.4: 0.9: 0.0: 0.7: 0.0: 0.5: 0.7						
GERENTE	36: 199: 310: 444: 64: 341: 178: 32: 28: 8: 39: 0: 349: 2028	5.0: 25.9: 6.2: 5.7: 3.3: 7.4: 3.5: 5.8: 8.2: 4.9: 5.8: 0.0: 4.6: 5.8						
PATRON	139: 153: 219: 1259: 324: 743: 956: 71: 103: 36: 129: 3: 1521: 7628	19.4: 19.9: 43.7: 16.3: 16.8: 16.1: 18.8: 12.8: 30.0: 22.1: 19.3: 25.0: 19.9: 21.6						
EMPLEADO	262: 251: 1585: 4590: 806: 1831: 1479: 239: 118: 58: 247: 3: 3448: 14917	36.5: 32.7: 31.6: 59.4: 41.7: 39.8: 29.1: 43.1: 34.4: 35.6: 36.9: 25.0: 45.1: 42.3						
OBRAERO	28: 8: 116: 222: 452: 168: 244: 19: 4: 11: 39: 0: 525: 1836	3.9: 1.0: 2.3: 2.9: 23.4: 3.6: 4.8: 3.4: 1.2: 6.7: 5.8: 0.0: 6.9: 5.2						
T.INDENP.	67: 88: 473: 825: 204: 1161: 507: 61: 34: 26: 71: 1: 927: 4445	9.3: 11.5: 9.4: 10.7: 10.6: 25.2: 10.0: 11.0: 9.9: 16.0: 10.6: 8.3: 12.1: 12.6						
PROD.RUR.	34: 28: 132: 106: 21: 137: 1495: 24: 21: 6: 21: 1: 229: 2255	4.7: 3.7: 2.6: 1.4: 1.1: 3.0: 29.4: 4.3: 6.1: 3.7: 3.1: 8.3: 3.0: 6.4						
F.ARMADAS	10: 15: 63: 119: 27: 92: 79: 92: 6: 1: 22: 0: 144: 670	1.4: 2.0: 1.3: 1.5: 1.4: 2.0: 1.6: 16.6: 1.7: 0.6: 3.3: 0.0: 1.9: 1.9						
RENTAS	7: 1: 44: 21: 4: 36: 55: 3: 13: 1: 5: 1: 60: 251	1.0: 0.1: 0.9: 0.3: 0.2: 0.8: 1.1: 0.5: 3.8: 0.6: 0.7: 8.3: 0.8: 0.7						
NO TRABAJA	7: 1: 5: 14: 8: 12: 15: 1: 1: 10: 3: 0: 43: 120	1.0: 0.1: 0.1: 0.1: 0.2: 0.4: 0.3: 0.3: 0.2: 0.3: 6.1: 0.4: 0.0: 0.3						
OTRA OCUP.	9: 15: 58: 77: 13: 50: 47: 10: 10: 5: 85: 2: 114: 495	1.3: 2.0: 1.2: 1.0: 0.7: 1.1: 0.9: 1.8: 2.9: 3.1: 12.7: 16.7: 1.5: 1.4						
NO REMUN.	1: 0: 1: 2: 1: 0: 2: 0: 0: 0: 0: 0: 1: 3: 11	0.1: 0.0: 0.0: 0.0: 0.1: 0.0: 0.0: 0.0: 0.0: 0.0: 0.0: 0.0: 0.0: 0.0						
NO SABE	4: 2: 23: 23: 4: 16: 11: 1: 2: 1: 3: 0: 237: 327	0.6: 0.3: 0.5: 0.3: 0.2: 0.3: 0.2: 0.2: 0.6: 0.6: 0.4: 0.0: 3.1: 0.9						
Total	717: 767: 5017: 7731: 1933: 4604: 5087: 555: 343: 163: 669: 12: 7637: 35235	100.0: 100.0: 100.0: 100.0: 100.0: 100.0: 100.0: 100.0: 100.0: 100.0: 100.0: 100.0: 100.0: 100.0						

CUADRO 36 POBLACION UNIVERSITARIA POR CATEGORIA DE EDAD
SEGUN OCUPACION DEL ESTUDIANTE.-

	Sin d 17-20 21-24 25-29 30-34 35 y más										Total
SIN DATOS	31	157	190	105	42	23					512
	6.4	1.1	0.9	0.7	0.7	0.5					0.8
GERENTE	11	21	67	126	97	131					443
	2.1	0.1	0.3	0.8	1.6	2.8					0.7
PATRON	21	87	415	502	244	269					1519
	4.3	0.6	2.0	3.3	4.0	5.8					2.5
EMPLEADO	211	2364	8466	9348	4235	2842					27276
	44.7	18.3	40.2	51.9	69.9	61.3					44.4
OBRAERO	11	107	240	154	55	38					595
	2.1	0.7	1.1	1.0	0.9	0.8					1.0
T. INDEMP.	11	434	1079	1141	500	547					3702
	2.1	3.0	5.1	7.5	8.2	11.8					6.0
PROD. RUR.	0	36	121	121	54	42					374
	0.0	0.2	0.6	0.8	0.9	0.9					0.6
F. ARMARIAS	0	13	56	88	64	39					260
	0.0	0.1	0.3	0.6	1.1	0.8					0.4
RENTAS	0	57	85	77	35	50					304
	0.0	0.4	0.4	0.5	0.6	1.1					0.5
NO TRABAJA	131	10730	9647	3081	610	506					24587
	27.7	74.0	45.8	20.4	10.1	10.9					40.0
OTRA OCUP.	41	356	381	211	81	107					1040
	8.5	1.8	1.8	1.4	1.3	2.3					1.7
NO. REMUN.	11	232	326	159	45	37					800
	2.1	1.6	1.5	1.1	0.7	0.8					1.3
Total	471	14494	21063	15113	6062	4633					61412
	100.0	100.0	100.0	100.0	100.0	100.0					100.0

CUADRO 37 POBLACION UNIVERSITARIA POR CATEGORIA DE EDAD
SEGUN CANTIDAD DE HORAS TRABAJADAS POR SEMANA.-

	Sin d 17-20 21-24 25-29 30-34 35 y más										Total
SIN DATOS	31	116	159	76	43	48					464
	6.3	0.8	0.7	0.6	0.7	1.0					0.8
NO TRABAJA	171	10835	9851	3046	616	556					24721
	35.4	74.7	45.8	30.2	10.2	12.0					40.2
HASTA 10	21	950	1524	937	325	237					4076
	4.2	6.8	7.7	6.2	5.4	5.1					6.6
10-20	41	799	2034	1288	457	463					5146
	8.3	5.3	9.7	9.2	7.5	10.0					8.4
21-30	41	651	2192	1309	772	591					6223
	8.3	4.3	10.4	13.3	12.7	12.8					10.1
31-40	101	557	2871	1151	1928	1274					10791
	20.8	3.8	13.8	27.5	31.8	27.5					17.6
MAS DE 40	81	592	2543	1487	1920	1462					10012
	16.7	4.1	12.1	23.1	31.7	31.6					16.3
Total	481	14503	21073	15114	6062	4633					61435
	100.0	100.0	100.0	100.0	100.0	100.0					100.0

SIN D GEREN PATRO EMPL	OBRER T IND PROD F ARM RENTA AMA C OTRA NO RE NO SA	ATOS TE N ADDO O ENP RUR ADAS S ASA OCUP MUN BE
SIN DATOS	153 81 301 1341 91 311 91 11 18 115 221 11 11	532 0.9
GERENTE	65 3071 171 11391 201 2991 391 41 102 1690 193 25 151	4069 6.6
PATRON	146 152 2568 2541 91 619 111 11 229 5735 426 75 45	12749 20.8
EMPLEADO	261 139 713 10885 359 1727 139 31 332 10677 638 209 80	26189 42.6
OBRERO	28 12 62 591 570 261 61 1 28 1363 80 33 8	3043 5.0
T INDEMP	76 98 164 1987 94 1630 63 71 167 3195 234 45 24	7784 12.7
PROD RUR	44 34 77 597 14 174 494 41 114 2007 177 41 12	3789 6.2
F ARMADAS	7 18 20 357 23 62 12 13 28 527 64 71 6	1144 1.9
RENTAS	10 4 15 78 4 20 31 0 113 197 17 21 2	465 0.8
NO TRABAJA	1 51 91 89 10 13 0 0 51 112 81 1 2	255 0.4
OTRA OCUP	6 18 31 161 91 50 91 0 23 283 262 31 3	858 1.4
NO REMUN	0 1 1 6 0 0 0 0 0 0 0 0 0	21 0.0
NO SABE	2 10 27 239 14 49 4 2 18 76 15 21 59	517 0.8
Total	799 805 388 18904 1217 4936 889 74 117 25985 2137 447 257	61415 100.0

CUADRO 39 POBLACION UNIVERSITARIA POR CURSADO DE SEGUNDA CARRERA
SEGUN ESTADO CIVIL.-

[illegible]

CUADRO 40 POBLACION UNIVERSITARIA POR CURSADO DE SEGUNDA CARRERA
SEGUN CANTIDAD DE HORAS TRABAJADAS POR SEMANA. -

[illegible]

[illegible]

**CUADRO 43 POBLACION UNIVERSITARIA POR CURSADO DE SEGUNDA CARRERA
SEGUN NACIONALIDAD.-**

SEXO MASCULINO.-

	SIN D	HUMA.	ABRO.	ARQUI	C.ECO	DEREC	INGER	MEDIC	ODONT	QUIM.	VETER	ADM.	BIBLY	A.OOD	B.	AR	ENFER	MUT.D	MUSIC	PSICO	S.	SO	TEC.	C.COM	Total
	ATOS	T.	HO										NT.	TES		LET.	A								
Sim datos	1	91	191	11	21	41	391	241	131	01	11	11	41	01	11	21	21	01	171	41	11	71	11	152	
	1	3.21	4.21	5.31	3.21	3.31	4.11	1.91	5.01	0.01	3.31	3.41	7.01	0.01	5.91	1.71	20.61	0.01	21.51	5.41	10.01	3.71	2.21	3.0	
Mont.	1	2071	3411	131	541	991	6921	9041	1211	91	251	101	391	21	101	911	31	11	511	471	71	031	301	2927	
	1	74.71	75.61	60.41	07.11	01.11	73.21	79.71	54.31	52.91	03.31	62.11	60.41	66.71	50.01	75.01	42.91	50.01	64.61	63.51	70.01	44.11	66.71	73.0	
Artig.	1	21	71	01	01	11	21	111	31	01	01	01	21	01	01	11	01	01	01	11	01	31	11	34	
	1	0.71	1.61	0.01	0.01	0.01	0.21	0.91	1.31	0.01	0.01	0.01	3.51	0.01	0.01	0.01	0.01	0.01	0.01	0.01	1.41	0.01	1.61	0.0	
Canel.	1	31	111	11	01	21	201	201	51	01	01	21	11	01	01	01	01	01	01	01	21	01	71	11	
	1	1.11	2.41	5.31	0.01	1.61	2.11	1.61	2.21	0.01	0.01	6.91	1.01	0.01	0.01	0.01	0.01	0.01	0.01	2.71	0.01	3.71	2.21	1.9	
C.Largo	1	21	21	01	01	11	241	151	21	01	01	11	01	01	01	01	01	01	11	31	01	21	11	54	
	1	0.71	0.41	0.01	0.01	0.01	2.51	1.21	0.91	0.01	0.01	3.41	0.01	0.01	0.01	0.01	0.01	0.01	1.31	4.11	0.01	1.11	2.21	1.3	
Colon.	1	61	71	01	21	01	141	141	61	01	01	01	11	01	21	31	01	01	21	01	01	71	11	65	
	1	2.21	1.61	0.01	3.21	0.01	1.51	1.11	2.71	0.01	0.01	0.01	1.01	0.01	11.01	2.51	0.01	0.01	2.51	0.01	0.01	3.71	2.21	1.6	
Duraz.	1	21	41	01	01	11	131	71	01	01	01	01	11	01	01	21	01	01	11	11	11	61	01	47	
	1	0.71	0.91	0.01	0.01	0.01	1.41	0.61	3.61	0.01	0.01	0.01	1.01	0.01	0.01	1.71	0.01	0.01	1.31	1.41	0.01	3.21	0.01	1.2	
Flores	1	21	31	11	01	11	71	71	01	01	01	01	11	01	01	01	01	01	01	01	01	01	01	22	
	1	0.71	0.71	5.31	0.01	0.01	0.71	0.61	0.01	0.01	0.01	0.01	1.01	0.01	0.01	0.01	0.01	0.01	0.01	0.01	0.01	0.01	0.01	0.5	
Florida	1	21	51	01	01	21	71	11	11	11	01	01	41	11	11	01	11	01	11	21	01	21	01	31	
	1	0.71	1.11	0.01	0.01	1.61	0.71	0.11	0.41	5.91	0.01	0.01	7.01	33.31	5.91	0.01	14.31	0.01	1.31	2.71	0.01	1.11	0.01	0.0	
Levall.	1	31	101	01	11	01	101	41	41	11	01	21	01	01	01	21	01	01	01	11	01	61	11	53	
	1	1.11	2.21	0.01	1.61	0.01	1.91	0.31	1.01	5.91	0.01	6.91	0.01	0.01	0.01	1.71	0.01	0.01	0.01	1.41	0.01	3.21	2.21	1.3	
Maldon.	1	21	31	01	01	01	121	141	61	01	11	01	01	01	01	11	01	01	01	01	01	61	31	40	
	1	0.71	0.71	0.01	0.01	0.01	1.31	1.11	2.71	0.01	3.31	0.01	0.01	0.01	0.01	0.01	0.01	0.01	0.01	0.01	0.01	3.21	6.71	1.2	
Pays.	1	41	31	01	01	11	121	301	71	11	01	11	01	01	01	21	01	01	01	21	11	01	61	11	
	1	1.41	0.71	0.01	0.01	0.01	1.31	2.41	3.11	5.91	0.01	3.41	0.01	0.01	0.01	1.71	0.01	0.01	2.51	1.41	0.01	3.21	2.21	1.0	
R.Negro	1	21	21	01	01	31	41	21	21	01	01	01	01	11	01	01	01	01	01	01	01	41	01	20	
	1	0.71	0.41	0.01	0.01	2.51	0.41	0.21	0.91	0.01	0.01	0.01	0.01	5.91	0.01	0.01	0.01	0.01	0.01	0.01	0.01	2.11	0.01	0.5	
Rivera	1	51	61	01	01	01	151	101	31	11	01	01	11	01	01	01	01	01	01	11	01	61	01	40	
	1	1.01	1.31	0.01	0.01	0.01	1.61	0.01	1.31	5.91	0.01	0.01	1.01	0.01	0.01	0.01	0.01	0.01	0.01	1.41	0.01	3.21	0.01	1.2	
Rocha	1	31	31	01	11	01	121	191	51	01	01	01	01	01	01	31	01	01	01	01	01	01	01	54	
	1	1.11	0.71	0.01	1.61	0.01	1.31	1.51	2.21	0.01	0.01	0.01	0.01	0.01	0.01	2.51	0.01	0.01	0.01	0.01	0.01	4.31	0.01	1.3	
Salto	1	01	31	01	01	21	101	201	131	21	01	11	11	01	01	31	01	01	01	31	11	161	01	91	
	1	2.91	0.71	0.01	0.01	1.61	1.11	2.31	5.01	11.01	0.01	3.41	1.01	0.01	0.01	2.51	0.01	0.01	0.01	4.11	10.01	0.51	0.01	2.3	
S.José	1	11	71	11	11	01	71	91	21	11	01	01	01	01	01	21	01	11	01	21	01	21	11	37	
	1	0.41	1.61	5.31	1.61	0.01	0.71	0.71	0.91	5.91	0.01	0.01	0.01	0.01	0.01	1.71	0.01	50.01	0.01	2.71	0.01	1.11	2.21	0.9	
Soriano	1	21	21	11	01	01	71	41	41	01	01	01	11	01	01	21	01	01	01	21	01	51	11	31	
	1	0.71	0.41	5.31	0.01	0.01	0.71	0.31	1.01	0.01	0.01	0.01	1.01	0.01	0.01	1.71	0.01	0.01	0.01	2.71	0.01	2.71	2.21	0.0	
Tacuare.	1	71	41	11	01	31	41	151	61	01	01	21	11	01	11	21	11	01	01	01	01	41	01	51	
	1	2.51	0.91	5.31	0.01	2.51	0.41	1.21	2.71	0.01	0.01	6.91	1.01	0.01	5.91	1.71	14.31	0.01	0.01	0.01	0.01	2.11	0.01	1.3	
T.y Tres	1	11	41	01	11	01	61	61	41	11	11	11	01	01	11	01	01	01	01	01	01	51	21	34	
	1	0.41	0.91	0.01	1.61	0.01	0.61	0.51	1.01	5.91	3.31	3.41	0.01	0.01	5.91	0.01	0.01	0.01	0.01	0.01	0.01	2.71	4.41	0.0	
Argent.	1	01	21	01	01	21	21	01	01	01	11	01	01	01	01	11	01	01	01	01	01	01	01	0	
	1	0.01	0.41	0.01	0.01	1.61	0.21	0.01	0.01	0.01	3.31	0.01	0.01	0.01	0.01	0.01	0.01	0.01	0.01	0.01	0.01	0.01	0.01	0.2	
Boliv.	1	01	01	01	01	01	01	01	01	01	01	01	01	01	01	11	01	01	01	01	01	01	01	1	
	1	0.01	0.01	0.01	0.01	0.01	0.01	0.01	0.01	0.01	0.01	0.01	0.01	0.01	0.01	0.01	0.01	0.01	0.01	0.01	0.01	0.01	0.01	0.0	
Brasil	1	01	01	01	01	01	01	21	01	01	01	01	01	01	01	01	01	01	01	01	01	01	01	2	
	1	0.01	0.01	0.01	0.01	0.01	0.01	0.21	0.01	0.01	0.01	0.01	0.01	0.01	0.01	0.01	0.01	0.01	0.01	0.01	0.01	0.01	0.01	0.0	
Chile	1	31	21	01	01	01	101	51	71	01	01	01	01	01	01	11	01	01	11	31	01	11	01	33	
	1	1.11	0.41	0.01	0.01	0.01	1.11	0.41	3.11	0.01	0.01	0.01	0.01	0.01	0.01	0.01	0.01	0.01	1.31	4.11	0.01	0.51	0.01	0.0	
Parag.	1	01	01	01	01	01	11	01	01	01	01	01	01	01	01	01	01	01	11	01	01	01	11	3	
	1	0.01	0.01	0.01	0.01	0.01	0.11	0.01	0.01	0.01	0.01	0.01	0.01	0.01	0.01	0.01	0.01	0.01	1.31	0.01	0.01	0.01	2.21	0.1	
R.Aser.	1	01	01	01	01	01	01	11	01	11	01	01	01	01	01	01	01	01	01	01	01	21	01	4	
	1	0.01	0.01	0.01	0.01	0.01	0.01	0.41	0.01	3.31	0.01	0.01	0.01	0.01	0.01	0.01	0.01	0.01	0.01	0.01	0.01	1.11	0.01	0.1	
Alca.	1	01	01	01	01	01	11	11	01	01	01	01	01	01	01	01	01	01	01	01	01	01	01	2	
	1	0.01	0.01	0.01	0.01	0.01	0.11	0.11	0.01	0.01	0.01	0.01	0.01	0.01	0.01	0.01	0.01	0.01	0.01	0.01	0.01	0.01	0.01	0.0	
España	1	11	01	01	01	01	21	01	01	01	01	01	01	01	01	01	01	01	01	01	01	01	01	3	
	1	0.41	0.01	0.01	0.01	0.01	0.21	0.01	0.01	0.01	0.01	0.01	0.01	0.01	0.01	0.01	0.01	0.01	0.01	0.01	0.01	0.01	0.01	0.1	
Italia	1	01	11	01	01	01	11	21	01	01	01	01	01	01	01	01	01	01	11	01	01	01	01	5	
	1	0.01	0.21	0.01	0.01	0.01	0.11	0.21	0.01	0.01	0.01	0.01	0.01	0.01	0.01	0.01	0.01	0.01	1.31	0.01	0.01	0.01	0.01	0.1	
R.Unido	1	01	01	01	01	01	21	01	01	01	01	01	01	01	01	01	01	01	01	01	01	01	01	2	
	1	0.01	0.01	0.01																					

CUADRO 44 POBLACION UNIVERSITARIA POR CURSADO DE SEGUNDA CARRERA SEGUN NACIONALIDAD.-

- 39 -

-SEXO FEMENINO.-

	SIN D	HUMA.	ABRO.	ARQUI	C.ECO	DERECH	INGER	MEDIC	ODONT	QUIM.	VETER	ADM.	BIBLI	A.OOD	B.	AR	ENFER	MUT.	D	MUSIC	PARTE	PSICO	S.	SO	TEC.	C.COM	Total
	ATOS																										
Sin datos	1	151	231	0	1	21	541	61	271	11	71	21	61	0	1	71	41	21	11	11	101	0	121	11			103
	1	4.41	4.61	0.01	2.01	1.71	3.41	1.71	5.21	1.01	12.31	0.71	4.51	0.01	1.01	3.31	5.31	6.91	2.71	11.11	4.01	0.01	1.91	1.41			3.5
Mont.	1	2531	3851	21	401	961	12111	2781	3021	411	391	141	941	0	1	761	1711	351	101	331	21	1361	251	3301	571		3630
	1	73.01	76.41	33.31	80.01	82.01	75.41	80.61	58.21	73.21	60.41	60.91	71.21	72.71	75.21	79.91	46.71	34.51	89.21	22.21	65.71	65.01	52.41	80.31			70.2
Artig.	1	0	0	0	0	0	161	71	121	11	0	0	0	0	0	21	11	41	11	0	0	61	11	221	0		75
	1	0.01	0.21	0.01	0.01	0.01	1.01	2.01	2.31	1.01	0.01	0.01	0.01	0.01	0.01	2.01	0.51	5.31	3.41	0.01	0.01	2.91	2.61	3.51	0.01		1.4
Cancl.	1	0	111	0	11	11	541	0	141	21	11	0	31	0	21	21	21	11	11	0	41	0	221	31			140
	1	2.31	2.21	0.01	2.01	0.91	3.41	2.31	2.71	3.61	1.01	0.01	2.31	0.01	2.01	0.91	2.71	3.41	2.71	0.01	1.91	0.01	3.51	4.21			2.7
C.Largo	1	41	21	0	11	11	141	11	61	21	0	41	0	0	11	11	0	0	0	0	0	21	11	31	11		44
	1	1.21	0.41	0.01	2.01	0.91	0.91	0.31	1.21	3.61	0.01	17.41	0.01	0.01	1.01	0.51	0.01	0.01	0.01	0.01	1.01	2.61	0.51	1.41			0.0
Colon.	1	31	141	0	0	0	231	31	151	21	11	0	11	0	21	41	31	0	0	0	0	31	11	251	0		100
	1	0.91	2.01	0.01	0.01	0.01	1.41	0.91	2.91	3.61	1.01	0.01	0.01	0.01	2.01	1.91	4.01	0.01	0.01	0.01	1.41	2.61	4.01	0.01			1.9
Duraz.	1	0	31	0	0	0	151	31	91	0	0	0	0	0	0	11	21	21	0	0	0	41	11	151	0		63
	1	2.31	0.61	0.01	0.01	0.01	0.91	0.91	1.71	0.01	0.01	0.01	0.01	0.01	0.01	0.51	2.71	6.91	0.01	0.01	1.91	2.61	2.41	0.01			1.2
Flores	1	0	21	0	0	0	51	31	21	0	0	0	11	11	11	0	11	11	0	0	0	41	0	21	0		23
	1	0.01	0.41	0.01	0.01	0.01	0.31	0.91	0.41	0.01	0.01	0.01	0.01	0.01	0.01	1.31	3.41	0.01	0.01	1.91	0.01	0.31	0.01			0.4	
Florida	1	41	51	0	0	21	111	31	31	0	11	0	0	0	0	11	21	0	0	0	0	41	11	91	0		46
	1	1.21	1.01	0.01	0.01	1.71	0.71	0.91	0.61	0.01	1.01	0.01	0.01	0.01	0.01	0.51	2.71	0.01	0.01	0.01	1.91	2.61	1.41	0.01			0.9
Lavall.	1	41	41	0	0	0	201	11	101	11	0	11	31	0	41	31	41	0	0	0	0	31	21	151	11		04
	1	1.21	0.01	0.01	0.01	0.01	1.71	0.31	1.91	1.01	0.01	4.31	2.31	0.01	4.01	1.41	5.31	0.01	0.01	0.01	1.41	5.31	2.41	1.41			1.6
Naldon.	1	21	71	11	0	21	201	71	131	11	0	0	21	0	21	31	21	0	0	11	21	0	141	11			00
	1	0.61	1.41	16.71	0.01	1.71	1.21	2.01	2.51	1.01	0.01	0.01	1.51	0.01	2.01	1.41	2.71	0.01	0.01	11.11	1.01	0.01	2.21	1.41			1.5
Pays.	1	61	41	11	11	31	191	61	101	0	0	0	21	0	0	41	11	0	0	0	0	41	21	221	11		06
	1	1.71	0.01	16.71	2.01	2.61	1.21	1.71	1.91	0.01	0.01	0.01	1.51	0.01	0.01	1.91	1.31	0.01	0.01	0.01	1.91	5.31	3.51	1.41			1.7
R.Negro	1	21	31	0	0	0	0	0	91	0	11	0	51	0	0	21	11	0	0	0	0	31	0	121	0		46
	1	0.61	0.61	0.01	0.01	0.01	0.51	0.01	1.71	0.01	1.01	0.01	3.01	0.01	0.01	0.91	1.31	0.01	0.01	0.01	1.41	0.01	1.91	0.01			0.9
Rivera	1	41	61	0	0	21	221	21	101	0	0	0	41	0	0	0	31	31	11	11	51	0	101	21			03
	1	1.21	1.21	0.01	0.01	1.71	1.41	0.61	1.91	0.01	0.01	0.01	3.01	0.01	0.01	0.01	4.01	10.31	2.71	11.11	2.41	0.01	2.91	2.01			1.6
Rocha	1	11	31	0	11	11	101	31	0	0	11	0	11	0	0	21	21	0	0	11	21	0	101	0			54
	1	0.31	0.61	0.01	2.01	0.91	1.11	0.91	1.51	0.01	1.01	0.01	0.01	0.01	0.91	2.71	0.01	0.01	11.11	1.01	0.01	1.61	0.01				1.0
Salto	1	71	61	11	0	11	271	0	291	31	21	0	21	11	11	11	11	51	0	0	61	0	291	11			131
	1	2.01	1.21	16.71	0.01	0.91	1.71	2.31	5.61	5.41	3.51	0.01	1.51	9.11	1.01	0.51	1.31	17.21	0.01	0.01	2.91	0.01	4.61	1.41			2.5
S.José	1	21	61	11	0	0	211	11	51	0	0	11	0	0	11	0	21	0	0	0	0	0	131	0			53
	1	0.61	1.21	16.71	0.01	0.01	1.31	0.31	1.01	0.01	0.01	4.31	0.01	0.01	1.01	0.01	2.71	0.01	0.01	0.01	0.01	0.01	2.11	0.01			1.0
Soriano	1	51	71	0	11	21	0	11	141	0	11	0	41	11	61	11	11	11	11	21	11	11	211	11			00
	1	1.51	1.41	0.01	2.01	1.71	0.51	0.31	2.71	0.01	1.01	0.01	3.01	9.11	5.91	0.51	1.31	3.41	2.71	22.21	0.51	2.61	3.31	1.41			1.5
Tacuare.	1	31	31	0	0	11	151	21	131	11	21	11	0	0	11	11	21	31	0	11	11	21	211	11			74
	1	0.91	0.61	0.01	0.01	0.91	0.91	0.61	2.51	1.01	3.51	4.31	0.01	0.01	1.01	0.51	2.71	10.31	0.01	11.11	0.51	5.31	3.31	1.41			1.4
T.y Tres	1	21	0	0	11	21	61	0	11	0	0	0	31	0	0	11	31	0	0	0	0	21	11	91	0		31
	1	0.61	0.01	0.01	2.01	1.71	0.41	0.01	0.21	0.01	0.01	0.01	2.31	0.01	0.01	0.51	4.01	0.01	0.01	0.01	1.01	2.61	1.41	0.01			0.6
Argent.	1	21	11	0	11	0	21	0	11	11	11	0	0	0	0	11	0	0	0	0	0	11	0	21	0		13
	1	0.61	0.21	0.01	2.01	0.01	0.11	0.01	0.21	1.01	1.01	0.01	0.01	0.01	0.01	0.51	0.01	0.01	0.01	0.01	0.51	0.01	0.31	0.01			0.3
Boliv.	1	0	11	0	0	0	0	0	0	0	0	0	0	0	0	0	0	0	0	0	0	0	0	0	0		1
	1	0.01	0.21	0.01	0.01	0.01	0.01	0.01	0.01	0.01	0.01	0.01	0.01	0.01	0.01	0.01	0.01	0.01	0.01	0.01	0.01	0.01	0.01	0.01	0.01		0.0
Brasil	1	21	0	0	0	0	31	0	11	0	0	0	0	0	0	0	0	0	0	0	0	0	0	0	0		6
	1	0.61	0.01	0.01	0.01	0.01	0.21	0.01	0.21	0.01	0.01	0.01	0.01	0.01	0.01	0.01	0.01	0.01	0.01	0.01	0.01	0.01	0.01	0.01	0.01		0.1
Chile	1	31	11	0	11	0	41	0	11	0	0	0	0	0	11	71	0	0	0	0	0	21	0	31	11		24
	1	0.91	0.21	0.01	2.01	0.01	0.21	0.01	0.21	0.01	0.01	0.01	0.01	0.01	1.01	3.31	0.01	0.01	0.01	0.01	1.01	0.01	0.51	1.41			0.5
Parag.	1	0	0	0	0	0	0	21	0	0	0	0	0	0	0	0	0	0	0	0	0	0	0	0	0		2
	1	0.01	0.01	0.01	0.01	0.01	0.61	0.01	0.01	0.01	0.01	0.01	0.01	0.01	0.01	0.01	0.01	0.01	0.01	0.01	0.01	0.01	0.01	0.01	0.01		0.0
R.Aeer.	1	21	0	0	11	0	0	0	11	0	0	0	0	0	0	0	0	0	0	0	0	0	0	0	0		4
	1	0.61	0.01	0.01	2.01	0.01	0.01	0.01	0.21	0.01	0.01	0.01	0.01	0.01	0.01	0.01	0.01	0.01	0.01	0.01	0.01	0.01	0.01	0.01	0.01		0.1
EEUU	1	11	11	0	0	0	0	0	0	0	0	0	0	0	0	0	0	0	0	0	0	0	0	0	0		3
	1	0.31	0.21	0.01	0.01	0.01	0.01	0.01	0.01	0.01	0.01	0.01	0.01	0.01	0.01	0.01	0.01	0.01	0.01	0.01	0.01	0.01	0.01	0.01	0.01		0.1
Alen.	1	0	0	0	0	0	0	0	0	0	0	0	0	0	0	0	0	0	0	0	0	0	0	0	0		1
	1	0.01	0.01																								

CUADRO 49 POBLACION UNIVERSITARIA POR EGRESADOS DE CARRERAS UNIVERSITARIAS
SEGUN OCUPACION DEL ESTUDIANTE. -

	Sin d	Hum y	Agro	Arqui	CC.EE	Derec	Ingen	Medic	Odont	Quimi	Veter	Admin	Bibli	Aux.O	B.Ar	Enfer	Nut.D	Musíc	Parte	Psico	Ser.S	Tec.M	C.Com	Total
	atos	CC	t.	ho	ca	is	ot.	don	es	let	a	r.	i.	oc.	ed.									
SIN DATOS	0.0	0.0	0.0	0.0	0.0	0.0	0.0	0.0	0.0	0.0	0.0	0.0	0.0	0.0	0.0	0.0	0.0	0.0	0.0	0.0	0.0	0.0	0.0	0.0
GERENTE	5.0	2.0	2.0	1.0	2.0	1.0	1.0	0.0	0.0	0.0	0.0	0.0	0.0	0.0	0.0	0.0	0.0	0.0	0.0	0.0	0.0	0.0	0.0	0.0
PATRON	0.0	0.0	0.0	0.0	0.0	0.0	0.0	0.0	0.0	0.0	0.0	0.0	0.0	0.0	0.0	0.0	0.0	0.0	0.0	0.0	0.0	0.0	0.0	0.0
EMPLEADO	19.0	77.0	17.0	21.0	455.0	356.0	481.0	59.0	15.0	14.0	12.0	260.0	53.0	74.0	2.0	48.0	17.0	8.0	28.0	67.0	79.0	416.0	5.0	357.0
OBRAJO	0.0	0.0	0.0	0.0	0.0	0.0	0.0	0.0	0.0	0.0	0.0	0.0	0.0	0.0	0.0	0.0	0.0	0.0	0.0	0.0	0.0	0.0	0.0	0.0
T.INDEP.	10.5	3.9	0.0	21.2	12.4	41.3	10.7	10.8	63.1	5.3	37.0	2.3	0.0	9.7	0.0	1.5	8.3	7.7	3.3	23.1	4.0	6.2	0.0	0.0
PROD.RUR.	2.0	0.0	0.0	0.0	0.0	0.0	0.0	0.0	0.0	0.0	0.0	0.0	0.0	0.0	0.0	0.0	0.0	0.0	0.0	0.0	0.0	0.0	0.0	0.0
F.ARMADAS	0.0	0.0	0.0	0.0	0.0	0.0	0.0	0.0	0.0	0.0	0.0	0.0	0.0	0.0	0.0	0.0	0.0	0.0	0.0	0.0	0.0	0.0	0.0	0.0
RENTAS	0.0	0.0	0.0	0.0	0.0	0.0	0.0	0.0	0.0	0.0	0.0	0.0	0.0	0.0	0.0	0.0	0.0	0.0	0.0	0.0	0.0	0.0	0.0	0.0
NO TRABAJA	15.8	7.8	5.0	0.1	3.9	5.5	4.6	7.2	4.6	15.8	11.1	5.1	8.5	15.9	0.0	10.6	12.5	0.0	13.3	7.4	10.0	21.0	12.5	0.0
OTRA OCUP.	2.0	0.0	0.0	0.0	0.0	0.0	0.0	0.0	0.0	0.0	0.0	0.0	0.0	0.0	0.0	0.0	0.0	0.0	0.0	0.0	0.0	0.0	0.0	0.0
NO.REMUN.	0.0	0.0	0.0	0.0	0.0	0.0	0.0	0.0	0.0	0.0	0.0	0.0	0.0	0.0	0.0	0.0	0.0	0.0	0.0	0.0	0.0	0.0	0.0	0.0
Total	38.0	102.0	20.0	33.0	611.0	871.0	672.0	83.0	65.0	19.0	27.0	311.0	59.0	113.0	2.0	66.0	24.0	13.0	30.0	121.0	100.0	648.0	0.0	4076.0

CUADRO 54 POBLACION UNIVERSITARIA POR EGRESADOS DE CARRERAS UNIVERSITARIAS
SEGUN UNIDADES ACADEMICAS.-

SEXO MASCULINO.-

Sin d Hum y Agron Arqu CC-EE Derec Ingen Medic Odont Veter Admin Biblii Aut:O Enfer Nut:D Music Parte Paico Ser:9 Tec:M C-Com		atos	CC	t.	Arqui	CC-EE	Derec	Ingen	Medic	Odont	Veter	Admin	Biblii	Aut:O	Enfer	Nut:D	Music	Parte	Paico	Ser:9	Tec:M	C-Com	Total
		1.	2.	3.	4.	5.	6.	7.	8.	9.	10.	11.	12.	13.	14.	15.	16.	17.	18.	19.	20.	21.	22.
HU. Y CIE.	134	0.0	15.0	0.0	10.0	4.0	17.0	27.0	13.0	3.0	21.0	4.0	3.0	24.0	0.0	0.0	0.0	0.0	0.0	0.0	0.0	0.0	0.0
	9.1	0.0	42.9	97.1	62.5	1.5	6.2	4.0	37.1	14.3	29.6	25.7	4.3	40.0	0.0	0.0	0.0	0.0	0.0	0.0	0.0	0.0	0.0
AGRONOMIA	5	1.0	0.0	0.0	0.0	1.0	0.0	0.0	0.0	0.0	0.0	0.0	0.0	0.0	0.0	0.0	0.0	0.0	0.0	0.0	0.0	0.0	0.0
	0.4	4.8	2.9	0.0	0.0	0.4	0.0	0.2	0.0	0.0	0.0	0.0	0.0	0.0	0.0	0.0	0.0	0.0	0.0	0.0	0.0	0.0	0.0
ARQUITECT.	1	0.0	0.0	0.0	0.0	0.0	0.0	0.0	0.0	0.0	0.0	0.0	0.0	0.0	0.0	0.0	0.0	0.0	0.0	0.0	0.0	0.0	0.0
	0.1	0.0	0.0	0.0	0.0	0.0	0.0	0.0	0.0	0.0	0.0	0.0	0.0	0.0	0.0	0.0	0.0	0.0	0.0	0.0	0.0	0.0	0.0
CCEE	289	11.0	0.0	0.0	0.0	25.0	0.0	6.0	0.0	1.0	0.0	1.0	0.0	1.0	0.0	0.0	0.0	0.0	0.0	0.0	0.0	0.0	0.0
	19.7	52.4	0.0	0.0	0.0	94.0	0.0	1.3	0.0	4.8	0.0	27.5	0.0	0.0	0.0	0.0	0.0	0.0	0.0	0.0	0.0	0.0	0.0
DERECHO	306	2.0	0.0	1.0	0.0	5.0	24.0	4.0	3.0	1.0	0.0	1.0	0.0	1.0	0.0	0.0	0.0	0.0	0.0	0.0	0.0	0.0	0.0
	20.8	9.5	22.9	7.1	0.0	1.9	96.2	0.0	9.5	1.9	0.0	12.2	26.1	20.0	0.0	0.0	0.0	0.0	0.0	0.0	0.0	0.0	0.0
INGENIERIA	413	2.0	4.0	0.0	2.0	4.0	0.0	39.0	0.0	1.0	2.0	0.0	0.0	0.0	0.0	0.0	0.0	0.0	0.0	0.0	0.0	0.0	0.0
	28.2	9.5	11.4	0.0	12.5	1.5	0.0	87.2	0.0	4.8	7.4	0.0	0.0	0.0	18.2	0.0	0.0	0.0	0.0	0.0	0.0	0.0	0.0
MEDICINA	124	1.0	2.0	0.0	0.0	0.0	0.0	0.0	0.0	0.0	0.0	0.0	0.0	0.0	0.0	0.0	0.0	0.0	0.0	0.0	0.0	0.0	0.0
	9.1	4.8	5.7	0.0	0.0	0.0	0.0	0.2	0.0	0.0	14.3	0.0	5.7	2.9	0.0	7.1	56.7	100.0	0.0	0.0	0.0	0.0	0.0
ODONTOLOG.	2	0.0	0.0	0.0	0.0	0.0	0.0	0.0	0.0	0.0	0.0	0.0	0.0	0.0	0.0	0.0	0.0	0.0	0.0	0.0	0.0	0.0	0.0
	0.5	0.0	0.0	0.0	0.0	0.0	0.0	0.0	0.0	0.0	0.0	0.0	0.0	0.0	0.0	0.0	0.0	0.0	0.0	0.0	0.0	0.0	0.0
QUIMICA	11	0.0	0.0	0.0	0.0	0.0	0.0	0.0	0.0	0.0	0.0	0.0	0.0	0.0	0.0	0.0	0.0	0.0	0.0	0.0	0.0	0.0	0.0
	0.7	0.0	0.0	0.0	0.0	0.0	0.0	0.0	0.0	0.0	0.0	0.0	0.0	0.0	0.0	0.0	0.0	0.0	0.0	0.0	0.0	0.0	0.0
VETERINARIA	19	0.0	0.0	0.0	0.0	0.0	0.0	0.0	0.0	0.0	0.0	0.0	0.0	0.0	0.0	0.0	0.0	0.0	0.0	0.0	0.0	0.0	0.0
	0.7	0.0	0.0	0.0	0.0	0.0	0.0	0.0	0.0	0.0	0.0	0.0	0.0	0.0	0.0	0.0	0.0	0.0	0.0	0.0	0.0	0.0	0.0
ADMINISTR.	27	0.0	0.0	0.0	0.0	0.0	0.0	0.0	0.0	0.0	0.0	0.0	0.0	0.0	0.0	0.0	0.0	0.0	0.0	0.0	0.0	0.0	0.0
	1.0	0.0	0.0	0.0	0.0	0.0	0.0	0.0	0.0	0.0	0.0	0.0	0.0	0.0	0.0	0.0	0.0	0.0	0.0	0.0	0.0	0.0	0.0
BIBLIOTEC.	0.1	0.0	0.0	0.0	0.0	0.0	0.0	0.0	0.0	0.0	0.0	0.0	0.0	0.0	0.0	0.0	0.0	0.0	0.0	0.0	0.0	0.0	0.0
	0.1	0.0	0.0	0.0	0.0	0.0	0.0	0.0	0.0	0.0	0.0	0.0	0.0	0.0	0.0	0.0	0.0	0.0	0.0	0.0	0.0	0.0	0.0
AUX.ODONT.	6	0.0	0.0	0.0	0.0	0.0	0.0	0.0	0.0	0.0	0.0	0.0	0.0	0.0	0.0	0.0	0.0	0.0	0.0	0.0	0.0	0.0	0.0
	0.1	0.0	0.0	0.0	0.0	0.0	0.0	0.0	0.0	0.0	0.0	0.0	0.0	0.0	0.0	0.0	0.0	0.0	0.0	0.0	0.0	0.0	0.0
CELLAS MR.	36	1.0	1.0	2.0	4.0	1.0	5.0	5.0	6.0	3.0	0.0	1.0	2.0	1.0	0.0	0.0	0.0	0.0	0.0	0.0	0.0	0.0	0.0
	0.5	4.8	2.9	14.3	25.0	0.4	1.8	1.1	17.1	14.3	0.0	6.7	2.9	20.0	0.0	0.0	0.0	0.0	0.0	0.0	0.0	0.0	0.0
MET.IMP.	2	0.0	0.0	0.0	0.0	0.0	0.0	0.0	0.0	0.0	0.0	0.0	0.0	0.0	0.0	0.0	0.0	0.0	0.0	0.0	0.0	0.0	0.0
	0.1	0.0	0.0	0.0	0.0	0.0	0.0	0.0	0.0	0.0	0.0	0.0	0.0	0.0	0.0	0.0	0.0	0.0	0.0	0.0	0.0	0.0	0.0
MUSICA	4	0.0	0.0	0.0	0.0	0.0	0.0	0.0	0.0	0.0	0.0	0.0	0.0	0.0	0.0	0.0	0.0	0.0	0.0	0.0	0.0	0.0	0.0
	0.3	0.0	0.0	0.0	0.0	0.0	0.0	0.0	0.0	0.0	0.0	0.0	0.0	0.0	0.0	0.0	0.0	0.0	0.0	0.0	0.0	0.0	0.0
PSICOLOG.	26	0.0	0.0	0.0	0.0	0.0	0.0	0.0	0.0	0.0	0.0	0.0	0.0	0.0	0.0	0.0	0.0	0.0	0.0	0.0	0.0	0.0	0.0
	1.9	0.0	0.0	0.0	0.0	0.0	0.0	0.0	0.0	0.0	0.0	0.0	0.0	0.0	0.0	0.0	0.0	0.0	0.0	0.0	0.0	0.0	0.0
SER.ED.	1	0.0	0.0	0.0	0.0	0.0	0.0	0.0	0.0	0.0	0.0	0.0	0.0	0.0	0.0	0.0	0.0	0.0	0.0	0.0	0.0	0.0	0.0
	0.1	0.0	0.0	0.0	0.0	0.0	0.0	0.0	0.0	0.0	0.0	0.0	0.0	0.0	0.0	0.0	0.0	0.0	0.0	0.0	0.0	0.0	0.0
REC.MET.	31	1.0	1.0	0.0	0.0	0.0	0.0	0.0	0.0	0.0	0.0	0.0	0.0	0.0	0.0	0.0	0.0	0.0	0.0	0.0	0.0	0.0	0.0
	2.8	0.0	0.0	0.0	0.0	0.0	0.0	0.0	0.0	0.0	0.0	0.0	0.0	0.0	0.0	0.0	0.0	0.0	0.0	0.0	0.0	0.0	0.0
DE.IMP.	10	0.0	0.0	0.0	0.0	0.0	0.0	0.0	0.0	0.0	0.0	0.0	0.0	0.0	0.0	0.0	0.0	0.0	0.0	0.0	0.0	0.0	0.0
	0.7	0.0	0.0	0.0	0.0	0.0	0.0	0.0	0.0	0.0	0.0	0.0	0.0	0.0	0.0	0.0	0.0	0.0	0.0	0.0	0.0	0.0	0.0
DE.IMP.	1469	1.0	1.0	1.0	1.0	1.0	1.0	1.0	1.0	1.0	1.0	1.0	1.0	1.0	1.0	1.0	1.0	1.0	1.0	1.0	1.0	1.0	1.0
	100.0	100.0	100.0	100.0	100.0	100.0	100.0	100.0	100.0	100.0	100.0	100.0	100.0	100.0	100.0	100.0	100.0	100.0	100.0	100.0	100.0	100.0	100.0

CUADRO 55 POBLACION UNIVERSITARIA POR EGRESADOS DE CARRERAS UNIVERSITARIAS
SEGUN UNIDADES ACADEMICAS.-
SEXO FEMENINO.-

Sin d Hum y Agron		CC	t.	CC-EE	Derec	Ingen Medic	Dent	Quim	Veter	Admin	Bibli	Aux.O	B.Ar	Enfer	Nut	D	Mus	Parte	Psico	Ser	S	Tec	M	C	Com	Total
		CC	t.	CC-EE	Derec	Ingen Medic	Dent	Quim	Veter	Admin	Bibli	Aux.O	B.Ar	Enfer	Nut	D	Mus	Parte	Psico	Ser	S	Tec	M	C	Com	Total
		CC	t.	CC-EE	Derec	Ingen Medic	Dent	Quim	Veter	Admin	Bibli	Aux.O	B.Ar	Enfer	Nut	D	Mus	Parte	Psico	Ser	S	Tec	M	C	Com	Total
SIN DATOS		0.0	0.0	0.0	0.0	0.0	0.0	0.0	0.0	0.0	0.0	0.0	0.0	0.0	0.0	0.0	0.0	0.0	0.0	0.0	0.0	0.0	0.0	0.0	0.0	1
HU. Y CIE.		1.24	21.71	41.54	141.13	16.31	51.10	23.11	91.41	21.11	91.41	21.11	91.41	21.11	91.41	21.11	91.41	21.11	91.41	21.11	91.41	21.11	91.41	21.11	91.41	206
ARQUITEC.		0.0	0.0	0.0	0.0	0.0	0.0	0.0	0.0	0.0	0.0	0.0	0.0	0.0	0.0	0.0	0.0	0.0	0.0	0.0	0.0	0.0	0.0	0.0	0.0	11.9
CCEE		17.6	1.5	0.0	0.0	0.0	0.0	0.0	0.0	0.0	0.0	0.0	0.0	0.0	0.0	0.0	0.0	0.0	0.0	0.0	0.0	0.0	0.0	0.0	0.0	3
DERECHO		11.0	7.5	33.3	11.0	4.4	62.9	0.9	0.0	4.5	0.3	6.3	8.7	13.0	5.9	0.0	0.0	0.0	0.0	0.0	0.0	0.0	0.0	0.0	0.0	281
INGENIERIA		1.0	0.0	0.0	0.0	0.0	0.0	0.0	0.0	0.0	0.0	0.0	0.0	0.0	0.0	0.0	0.0	0.0	0.0	0.0	0.0	0.0	0.0	0.0	0.0	14.8
MEDICINA		41.6	0.0	0.0	0.0	0.0	0.0	0.0	0.0	0.0	0.0	0.0	0.0	0.0	0.0	0.0	0.0	0.0	0.0	0.0	0.0	0.0	0.0	0.0	0.0	246
ODONTOLOGOS.		0.0	0.0	0.0	0.0	0.0	0.0	0.0	0.0	0.0	0.0	0.0	0.0	0.0	0.0	0.0	0.0	0.0	0.0	0.0	0.0	0.0	0.0	0.0	0.0	9.6
QUIMICA		0.0	0.0	0.0	0.0	0.0	0.0	0.0	0.0	0.0	0.0	0.0	0.0	0.0	0.0	0.0	0.0	0.0	0.0	0.0	0.0	0.0	0.0	0.0	0.0	61
VETERINA.		0.0	1.5	0.0	0.0	0.0	0.0	0.0	0.0	0.0	0.0	0.0	0.0	0.0	0.0	0.0	0.0	0.0	0.0	0.0	0.0	0.0	0.0	0.0	0.0	2.4
ADMINIST.		1.1	0.0	0.0	0.0	0.0	0.0	0.0	0.0	0.0	0.0	0.0	0.0	0.0	0.0	0.0	0.0	0.0	0.0	0.0	0.0	0.0	0.0	0.0	0.0	13
BIBLIOTEC.		0.0	1.5	0.0	0.0	0.0	0.0	0.0	0.0	0.0	0.0	0.0	0.0	0.0	0.0	0.0	0.0	0.0	0.0	0.0	0.0	0.0	0.0	0.0	0.0	0.5
AUX.ODONT.		0.0	0.0	0.0	0.0	0.0	0.0	0.0	0.0	0.0	0.0	0.0	0.0	0.0	0.0	0.0	0.0	0.0	0.0	0.0	0.0	0.0	0.0	0.0	0.0	18
BELLAS AR.		0.0	8.2	11.9	33.3	29.4	0.9	1.0	3.2	27.1	13.0	8.3	9.3	3.3	11.1	1.0	50.0	0.3	9.1	0.0	0.0	0.0	0.0	0.0	0.0	0.7
ENFERME.		1.1	0.0	0.0	0.0	0.0	0.0	0.0	0.0	0.0	0.0	0.0	0.0	0.0	0.0	0.0	0.0	0.0	0.0	0.0	0.0	0.0	0.0	0.0	0.0	124
NUT.DIET.		0.0	1.1	0.0	0.0	0.0	0.0	0.0	0.0	0.0	0.0	0.0	0.0	0.0	0.0	0.0	0.0	0.0	0.0	0.0	0.0	0.0	0.0	0.0	0.0	4.8
MUSICA		0.0	0.0	0.0	0.0	0.0	0.0	0.0	0.0	0.0	0.0	0.0	0.0	0.0	0.0	0.0	0.0	0.0	0.0	0.0	0.0	0.0	0.0	0.0	0.0	8
PARTERAS		0.0	0.0	0.0	0.0	0.0	0.0	0.0	0.0	0.0	0.0	0.0	0.0	0.0	0.0	0.0	0.0	0.0	0.0	0.0	0.0	0.0	0.0	0.0	0.0	0.3
PSICOLOGOS.		1.1	0.0	0.0	0.0	0.0	0.0	0.0	0.0	0.0	0.0	0.0	0.0	0.0	0.0	0.0	0.0	0.0	0.0	0.0	0.0	0.0	0.0	0.0	0.0	34
SER.SOC.		0.0	1.5	0.0	0.0	0.0	0.0	0.0	0.0	0.0	0.0	0.0	0.0	0.0	0.0	0.0	0.0	0.0	0.0	0.0	0.0	0.0	0.0	0.0	0.0	1.4
TEC.MED.		11.0	6.0	0.0	0.0	0.0	0.0	0.0	0.0	0.0	0.0	0.0	0.0	0.0	0.0	0.0	0.0	0.0	0.0	0.0	0.0	0.0	0.0	0.0	0.0	131
CIE.COM.		5.9	4.5	0.0	0.0	0.0	0.0	0.0	0.0	0.0	0.0	0.0	0.0	0.0	0.0	0.0	0.0	0.0	0.0	0.0	0.0	0.0	0.0	0.0	0.0	5.1
Total		171	67	6	17	343	596	220	48	44	12	121	242	54	102	2	68	22	9	38	91	94	479	3	2568	130.0

Se terminó de imprimir
en el Departamento de Publicaciones
de la Universidad de la República
Montevideo, Uruguay
en el mes de junio de 1991
Depósito Legal 248.938